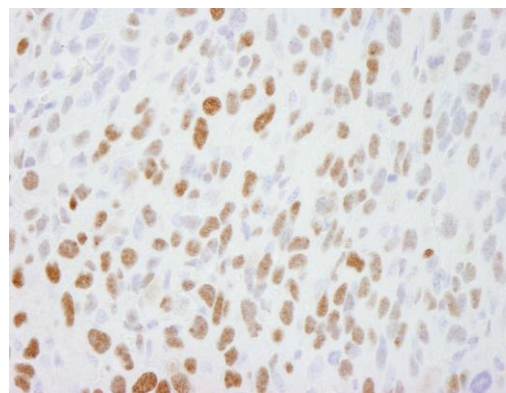


**Detection of human DBC1/p30 by immunohistochemistry.** *Sample:* FFPE section of human breast tumor. *Antibody:* Affinity purified rabbit anti-DBC1/p30 (Cat. No. IHC-00135) used at a dilution of



**Detection of mouse DBC1/p30 by immunohistochemistry.** *Sample:* FFPE section of mouse squamous cell carcinoma. *Antibody:* Affinity purified rabbit anti-DBC1/p30 (Cat. No. IHC-00135) used at a dilution of 1:250. *Detection:* DAB