

# UBCH7 IHC Antibody

Rabbit Polyclonal

Antigen Affinity Purified

Protein ID NP\_003338.1

Catalog No. IHC-00148

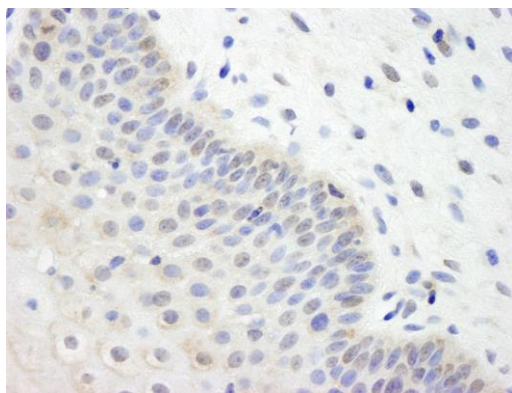
GeneID 7332

Lot No. IHC-00148-1

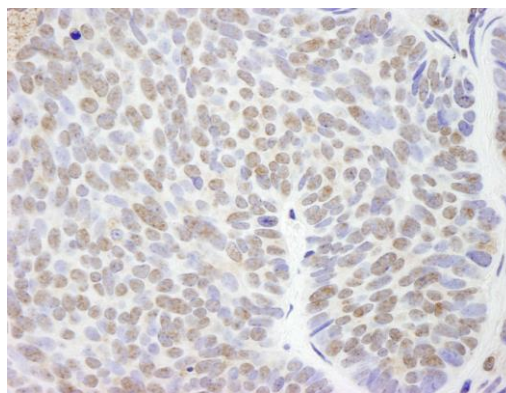


<b>APPLICATIONS</b>	IHC
<b>SPECIES REACTIVITY</b>	Human
<b>PRESUMED REACTIVITY</b>	Based on 100% sequence identity, this antibody is predicted to react with Mouse, Rat, <i>X. laevis</i> , <i>X. tropicalis</i> , Chicken, Turkey, Bovine, Dog, Horse, Rabbit, Guinea pig_10141, Pig, Panda and Orangutan
<b>AMOUNT</b>	100 µl
<b>CONCENTRATION</b>	100 µg/ml
<b>STORAGE/SHELF LIFE</b>	2 – 8° C / 1 year from date of receipt
<b>PHYSICAL STATE</b>	Liquid
<b>BUFFER</b>	Tris-buffered Saline containing 0.1% BSA and 0.09% Sodium Azide
<b>ISOTYPE</b>	IgG
<b>ORIGIN</b>	USA
<b>PRODUCTION PROCEDURES</b>	Antibody was affinity purified using an epitope specific to UBCH7 immobilized on solid support.  The epitope recognized by IHC-00148 maps to a region between residues 100 and the C-terminus (residue 154) of human Ubiquitin-Conjugating Enzyme H7 using the numbering given in entry NP_003338.1 (GeneID 7332).
<b>APPLICATIONS</b>	Centrifuge tube to remove product from lid. Optimal working dilutions should be determined experimentally by the investigator. Prepare working dilution immediately before use.  Immunohistochemistry 1:100 – 1:500
<b>APPLICATION NOTES</b>	Epitope exposure is recommended.  Epitope exposure with citrate buffer will enhance staining.  Likely to work with frozen sections.
<b>IHC HUMAN CONTROLS</b>	In some cases, the antibody may be diluted further than indicated. Breast Carcinoma, Cervix, Metastatic Lymph Node, Ovarian Carcinoma, Prostate Carcinoma, Skin, Skin Basal Cell Carcinoma, Testicular Seminoma
<b>ADDITIONAL INFO</b>	<a href="https://www.bethyl.com/product/IHC-00148">https://www.bethyl.com/product/IHC-00148</a> Use the link above to view SDS, a current list of citations, and other product specific information.

This document certifies that this product has met all of the quality control standards defined by Bethyl Laboratories, Inc.  
Eric McIntush, PhD | Chief Scientific Officer Date: June 21, 2019



**Detection of human UBCH7 by immunohistochemistry.**  
*Sample:* FFPE section of human cervix. *Antibody:* Affinity purified rabbit anti-UBCH7 (Cat. No. IHC-00148) used at a dilution of 1:500. *Detection:* DAB



**Detection of human UBCH7 by immunohistochemistry.**  
*Sample:* FFPE section of human basal cell carcinoma. *Antibody:* Affinity purified rabbit anti-UBCH7 (Cat. No. IHC-00148) used at a dilution of 1:100. *Detection:* DAB