

# TRIP1 /SUG1 IHC Antibody

Rabbit Polyclonal

Antigen Affinity Purified Protein ID NP\_002796.4

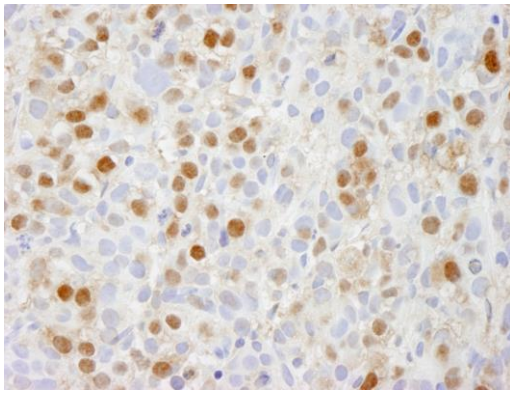
Catalog No. IHC-00151 GeneID 5705

Lot No. IHC-00151-1

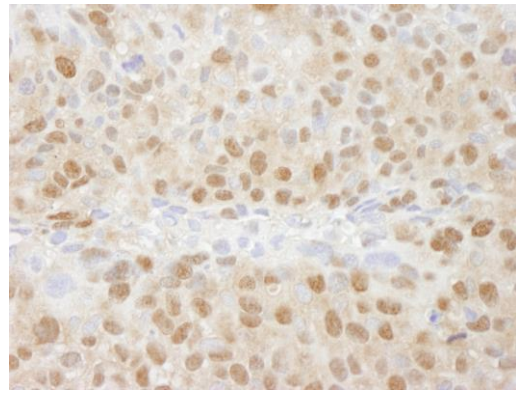


<b>APPLICATIONS</b>	IHC
<b>SPECIES REACTIVITY</b>	Human, Mouse
<b>PRESUMED REACTIVITY</b>	Based on 100% sequence identity, this antibody is predicted to react with Rat, Bovine, Dog, Horse, Rabbit, Guinea pig_10141, Pig, Panda, Orangutan, Monkey, Gorilla, Chimpanzee and Small-eared galago
<b>AMOUNT</b>	100 µl
<b>CONCENTRATION</b>	250 µg/ml
<b>STORAGE/SHELF LIFE</b>	2 - 8° C / 1 year from date of receipt
<b>PHYSICAL STATE</b>	Liquid
<b>BUFFER</b>	Tris-buffered Saline containing 0.1% BSA and 0.09% Sodium Azide
<b>ISOTYPE</b>	IgG
<b>ORIGIN</b>	USA
<b>PRODUCTION PROCEDURES</b>	Antibody was affinity purified using an epitope specific to TRIP1 /SUG1 immobilized on solid support.  The epitope recognized by IHC-00151 maps to a region between residues 1 and 50 of human Thyroid Receptor Interactor 1 using the numbering given in entry NP_002796.4 (GeneID 5705).
<b>APPLICATIONS</b>	Centrifuge tube to remove product from lid. Optimal working dilutions should be determined experimentally by the investigator. Prepare working dilution immediately before use.  Immunohistochemistry 1:100 - 1:500
<b>APPLICATION NOTES</b>	Epitope exposure is recommended.  Epitope exposure with citrate buffer will enhance staining.  Likely to work with frozen sections.
<b>IHC HUMAN CONTROLS</b>	In some cases, the antibody may be diluted further than indicated. Breast Carcinoma, Colon Carcinoma, Linitis Plastica Stomach Cancer, Metastatic Lymph Node, Ovarian Carcinoma, Prostate Carcinoma, Stomach Adenocarcinoma, Testicular Seminoma
<b>IHC MOUSE CONTROLS</b>	Squamous Cell Carcinoma
<b>ADDITIONAL INFO</b>	<a href="https://www.bethyl.com/product/IHC-00151">https://www.bethyl.com/product/IHC-00151</a> Use the link above to view SDS, a current list of citations, and other product specific information.

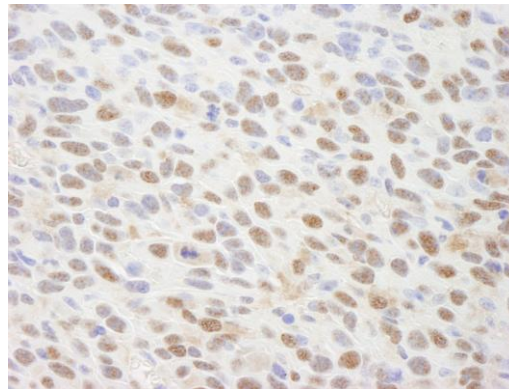
This document certifies that this product has met all of the quality control standards defined by Bethyl Laboratories, Inc.  
Eric McIntush, PhD | Chief Scientific Officer Date: June 21, 2019



**Detection of human TRIP1/SUG1 by immunohistochemistry.** *Sample:* FFPE section of human metastatic bone marrow. *Antibody:* Affinity purified rabbit anti-TRIP1/SUG1 (Cat. No. IHC-00151) used at a dilution of 1:250. *Detection:* DAB



**Detection of human TRIP1/SUG1 by immunohistochemistry.** *Sample:* FFPE section of human breast tumor. *Antibody:* Affinity purified rabbit anti-TRIP1/SUG1 (Cat. No. IHC-00151) used at a dilution of 1:250. *Detection:* DAB



**Detection of mouse TRIP1/SUG1 by immunohistochemistry.** *Sample:* FFPE section of mouse squamous cell carcinoma. *Antibody:* Affinity purified rabbit anti-TRIP1/SUG1 (Cat. No. IHC-00151) used at a dilution of 1:250. *Detection:* DAB