

THRAP3/TRAP150 IHC Antibody

Rabbit Polyclonal

Antigen Affinity Purified Protein ID NP_005110.1

Catalog No. IHC-00158 GeneID 9967

Lot No. IHC-00158-1



APPLICATIONS	IHC
SPECIES REACTIVITY	Human
PRESUMED REACTIVITY	Based on 100% sequence identity, this antibody is predicted to react with Orangutan, Gorilla, Chimpanzee and Northern white-cheeked gibbon
AMOUNT	100 µl
CONCENTRATION	250 µg/ml
STORAGE/SHELF LIFE	2 – 8° C / 1 year from date of receipt
PHYSICAL STATE	Liquid
BUFFER	Tris-buffered Saline containing 0.1% BSA and 0.09% Sodium Azide
ISOTYPE	IgG
ORIGIN	USA
PRODUCTION PROCEDURES	Antibody was affinity purified using an epitope specific to THRAP3/TRAP3150 immobilized on solid support.

The epitope recognized by IHC-00158 maps to a region between residues 905 and the C-terminus (residue 955) of human Thyroid Hormone Receptor Associated Protein 3 (Thyroid Hormone Receptor-Associated Protein, 150 kDa) using the numbering given in entry NP_005110.1 (GeneID 9967).

APPLICATIONS Centrifuge tube to remove product from lid. Optimal working dilutions should be determined experimentally by the investigator. Prepare working dilution immediately before use.

Immunohistochemistry 1:100 – 1:500

APPLICATION NOTES Epitope exposure is recommended.

Epitope exposure with citrate buffer will enhance staining.

Likely to work with frozen sections.

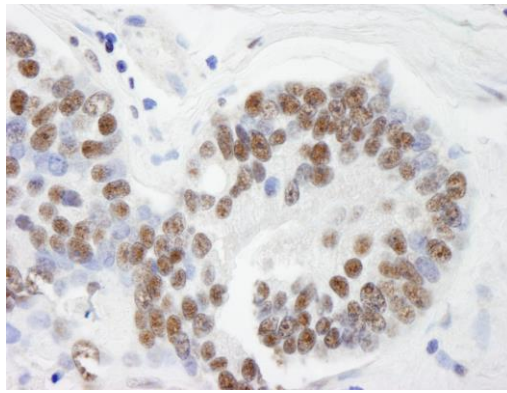
In some cases, the antibody may be diluted further than indicated.

IHC HUMAN CONTROLS Breast Carcinoma, Colon Carcinoma, Laryngeal Squamous Cell Carcinoma, Linitis Plastica Stomach Cancer, Metastatic Lymph Node, Non-Small Cell Lung Cancer, Ovarian Carcinoma, Prostate Carcinoma, Skin Basal Cell Carcinoma, Small Cell Lung Cancer, Stomach Adenocarcinoma, Testicular Seminoma

ADDITIONAL INFO <https://www.bethyl.com/product/IHC-00158>

Use the link above to view SDS, a current list of citations, and other product specific information.

This document certifies that this product has met all of the quality control standards defined by Bethyl Laboratories, Inc.
Eric McIntush, PhD | Chief Scientific Officer Date: June 21, 2019



Detection of human THRAP3/TRAP150 by immunohistochemistry. *Sample:* FFPE section of human prostate adenocarcinoma. *Antibody:* Affinity purified rabbit anti-THRAP3/TRAP150 (Cat. No. IHC-00158) used at a dilution of 1:250. *Detection:* DAB