

Coronin 1 IHC Antibody

Rabbit Polyclonal

Antigen Affinity Purified

Protein ID NP_009005.1

Catalog No. IHC-00164

GeneID 11151

Lot No. IHC-00164-1



APPLICATIONS	IHC
SPECIES REACTIVITY	Human, Mouse
PRESUMED REACTIVITY	Based on 100% sequence identity, this antibody is predicted to react with Rat, Bovine, Dog, Rabbit, Pig, Panda, Orangutan, Monkey, Gorilla, Chimpanzee, Naked mole rat and Northern white-cheeked gibbon
AMOUNT	100 µl
CONCENTRATION	50 µg/ml
STORAGE/SHELF LIFE	2 - 8° C / 1 year from date of receipt
PHYSICAL STATE	Liquid
BUFFER	Tris-buffered Saline containing 0.1% BSA and 0.09% Sodium Azide
ISOTYPE	IgG
ORIGIN	USA
PRODUCTION PROCEDURES	Antibody was affinity purified using an epitope specific to Coronin 1 immobilized on solid support.

The epitope recognized by IHC-00164 maps to a region between residues 250 and 300 of human Coronin 1 (Coronin, Actin Binding Protein 1A) using the numbering given in entry NP_009005.1 (GeneID 11151).

APPLICATIONS Centrifuge tube to remove product from lid. Optimal working dilutions should be determined experimentally by the investigator. Prepare working dilution immediately before use.

Immunohistochemistry 1:100 - 1:500

APPLICATION NOTES Epitope exposure is recommended.

Epitope exposure with citrate buffer will enhance staining.

Likely to work with frozen sections.

In some cases, the antibody may be diluted further than indicated.

IHC HUMAN CONTROLS Stomach Adenocarcinoma

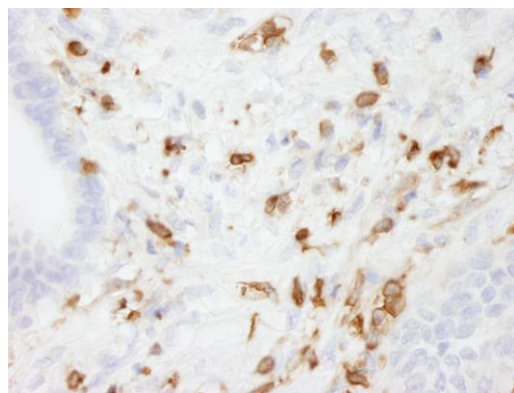
IHC MOUSE CONTROLS Fibroma

ADDITIONAL INFO <https://www.bethyl.com/product/IHC-00164>

Use the link above to view SDS, a current list of citations, and other product specific information.

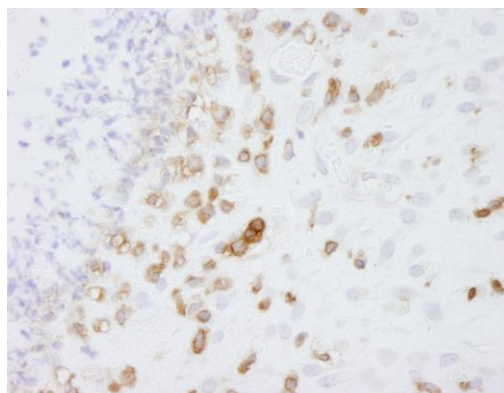
This document certifies that this product has met all of the quality control standards defined by Bethyl Laboratories, Inc.
Eric McIntush, PhD | Chief Scientific Officer

Date: June 21, 2019

**Detection of human Coronin 1 by immunohistochemistry.**

Sample: FFPE section of human stomach adenocarcinoma.

Antibody: Affinity purified rabbit anti-Coronin 1 (Cat. No. IHC-00164) used at a dilution of 1:250. *Detection:* DAB

**Detection of mouse Coronin 1 by immunohistochemistry.**

Sample: FFPE section of mouse fibroma. *Antibody:* Affinity purified rabbit anti-Coronin 1 (Cat. No. IHC-00164) used at a dilution of 1:250. *Detection:* DAB