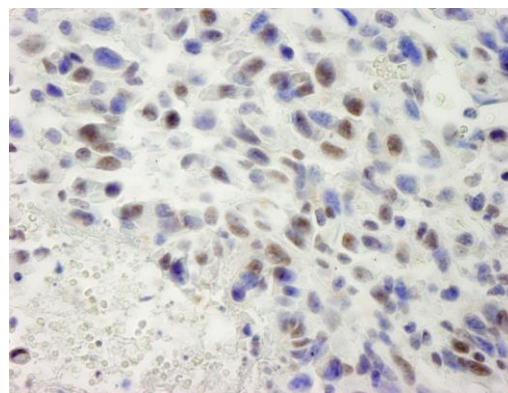


**Detection of human hSET1 by immunohistochemistry.**  
*Sample:* FFPE section of human breast adenocarcinoma.  
*Antibody:* Affinity purified rabbit anti-hSET1 (Cat. No. IHC-00171) used at a dilution of 1:250. *Detection:* DAB



**Detection of mouse hSET1 by immunohistochemistry.**  
*Sample:* FFPE section of mouse squamous cell carcinoma.  
*Antibody:* Affinity purified rabbit anti-hSET1 (Cat. No. IHC-00171) used at a dilution of 1:250. *Detection:* DAB