

RbBP5 IHC Antibody

Rabbit Polyclonal

Antigen Affinity Purified

Protein ID NP_005048.2

Catalog No. IHC-00172

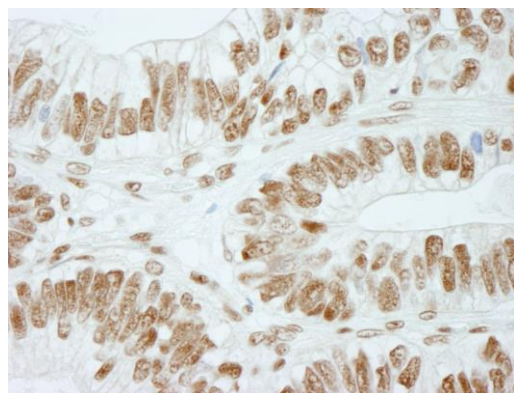
GeneID 5929

Lot No. IHC-00172-1

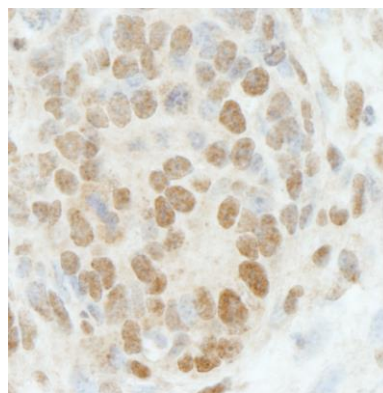


APPLICATIONS	IHC
SPECIES REACTIVITY	Human, Mouse
PRESUMED REACTIVITY	Based on 100% sequence identity, this antibody is predicted to react with Bovine, Horse, Orangutan, Monkey, Gorilla, Northern white-cheeked gibbon, Little brown bat and thirteen-lined ground squirrel
AMOUNT	100 µl
CONCENTRATION	250 µg/ml
STORAGE/SHELF LIFE	2 - 8° C / 1 year from date of receipt
PHYSICAL STATE	Liquid
BUFFER	Tris-buffered Saline containing 0.1% BSA and 0.09% Sodium Azide
ISOTYPE	IgG
ORIGIN	USA
PRODUCTION PROCEDURES	Antibody was affinity purified using an epitope specific to RbBP5 immobilized on solid support. The epitope recognized by IHC-00172 maps to a region between residues 500 and the C-terminus (residue 538) of human retinoblastoma binding protein 5 using the numbering given in entry NP_005048.2 (GeneID 5929).
APPLICATIONS	Centrifuge tube to remove product from lid. Optimal working dilutions should be determined experimentally by the investigator. Prepare working dilution immediately before use. Immunohistochemistry 1:100 - 1:500
APPLICATION NOTES	Epitope exposure is recommended. Epitope exposure with citrate buffer will enhance staining. Likely to work with frozen sections.
IHC HUMAN CONTROLS	In some cases, the antibody may be diluted further than indicated. Breast Carcinoma, Colon Carcinoma, Laryngeal Squamous Cell Carcinoma, Linitis Plastica Stomach Cancer, Metastatic Lymph Node, Non-Small Cell Lung Cancer, Ovarian Carcinoma, Prostate Carcinoma, Skin Basal Cell Carcinoma, Small Cell Lung Cancer, Stomach Adenocarcinoma, Testicular Seminoma
IHC MOUSE CONTROLS	Colon Carcinoma CT26, Squamous Cell Carcinoma, Teratoma
ADDITIONAL INFO	https://www.bethyl.com/product/IHC-00172 Use the link above to view SDS, a current list of citations, and other product specific information.

This document certifies that this product has met all of the quality control standards defined by Bethyl Laboratories, Inc.
Eric McIntush, PhD | Chief Scientific Officer Date: June 21, 2019



Detection of human RbBP5 by immunohistochemistry.
Sample: FFPE section of human colon adenocarcinoma.
Antibody: Affinity purified rabbit anti-RbBP5 (Cat. No. IHC-00172) used at a dilution of 1:250. *Detection:* DAB



Detection of mouse RbBP5 by immunohistochemistry.
Sample: FFPE section of mouse teratoma. *Antibody:* Affinity purified rabbit anti-RbBP5 (Cat. No. IHC-00172) used at a dilution of 1:250. *Detection:* DAB