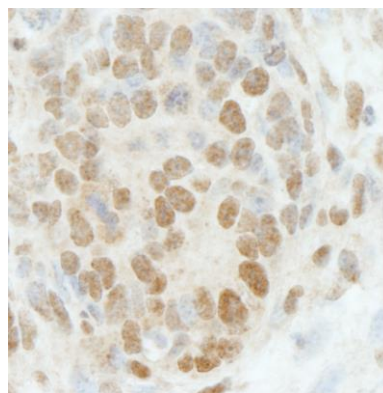


**Detection of human RbBP5 by immunohistochemistry.**  
*Sample:* FFPE section of human colon adenocarcinoma.  
*Antibody:* Affinity purified rabbit anti-RbBP5 (Cat. No. IHC-00172-T) used at a dilution of 1:250. *Detection:* DAB



**Detection of mouse RbBP5 by immunohistochemistry.**  
*Sample:* FFPE section of mouse teratoma. *Antibody:* Affinity purified rabbit anti-RbBP5 (Cat. No. IHC-00172-T) used at a dilution of 1:250. *Detection:* DAB