

SMC6 IHC Antibody

Rabbit Polyclonal

Antigen Affinity Purified

Protein ID Q96SB8

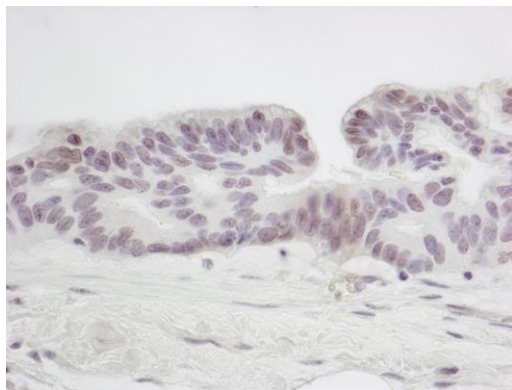
Catalog No. IHC-00198

GeneID 79677

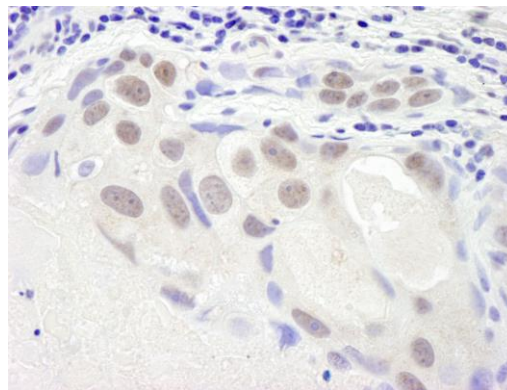
Lot No. IHC-00198-1



| | |
|------------------------------|--|
| APPLICATIONS | IHC |
| SPECIES REACTIVITY | Human |
| PRESUMED REACTIVITY | Based on 100% sequence identity, this antibody is predicted to react with Chimpanzee |
| AMOUNT | 100 µl |
| STORAGE/SHELF LIFE | 2 - 8° C / 1 year from date of receipt |
| PHYSICAL STATE | Liquid |
| BUFFER | Tris-buffered Saline containing 0.1% BSA and 0.09% Sodium Azide |
| ORIGIN | USA |
| PRODUCTION PROCEDURES | Antibody was affinity purified using an epitope specific to SMC6 immobilized on solid support. The epitope recognized by IHC-00198 maps to a region between residues 1050 and the C-terminus (residue 1091) of human Structural Maintenance of Chromosomes 6 using the numbering given in TrEMBL entry Q96SB8 (GeneID 79677). |
| APPLICATIONS | Centrifuge tube to remove product from lid. Optimal working dilutions should be determined experimentally by the investigator. Prepare working dilution immediately before use. Immunohistochemistry 1:100 - 1:500 |
| APPLICATION NOTES | Epitope exposure is recommended. Epitope exposure with citrate buffer will enhance staining. Likely to work with frozen sections. |
| IHC HUMAN CONTROLS | In some cases, the antibody may be diluted further than indicated. Breast Carcinoma, Lung Adenocarcinoma, Ovarian Carcinoma, Prostate Carcinoma, Stomach Adenocarcinoma |
| ADDITIONAL INFO | http://www.bethyl.com/product/IHC-00198 Use the link above to view SDS, a current list of citations, and other product specific information. |



Detection of human SMC6 by immunohistochemistry.
Sample: FFPE section of human ovarian tumor. *Antibody:* Affinity purified rabbit anti-SMC6 (Cat. No. IHC-00198) used at a dilution of 1:250. *Detection:* DAB



Detection of human SMC6 by immunohistochemistry.
Sample: FFPE section of human breast tumor. *Antibody:* Affinity purified rabbit anti-SMC6 (Cat. No. IHC-00198) used at a dilution of 1:250. *Detection:* DAB