

SUPT5H IHC Antibody

Rabbit Polyclonal

Antigen Affinity Purified

Protein ID NP_003160.2

Catalog No. IHC-00210

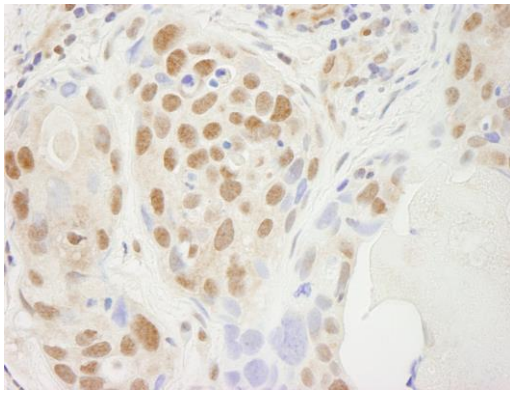
GeneID 6829

Lot No. IHC-00210-1

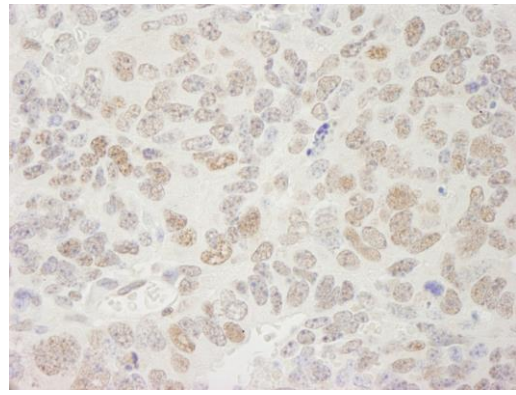


APPLICATIONS	IHC
SPECIES REACTIVITY	Human, Mouse
PRESUMED REACTIVITY	Based on 100% sequence identity, this antibody is predicted to react with Rat, Chicken, Turkey, Bovine, Dog, Horse, Rabbit, Guinea pig_10141, Pig, Panda, Orangutan, Monkey, Gorilla and Chimpanzee
AMOUNT	100 µl
CONCENTRATION	250 µg/ml
STORAGE/SHELF LIFE	2 - 8° C / 1 year from date of receipt
PHYSICAL STATE	Liquid
BUFFER	Tris-buffered Saline containing 0.1% BSA and 0.09% Sodium Azide
ISOTYPE	IgG
ORIGIN	USA
PRODUCTION PROCEDURES	Antibody was affinity purified using an epitope specific to SUPT5H immobilized on solid support. The epitope recognized by IHC-00210 maps to a region between residues 1040 and the C-terminus (residue 1087) of human Suppressor of Ty 5 Homolog using the numbering given in entry NP_003160.2 (GeneID 6829).
APPLICATIONS	Centrifuge tube to remove product from lid. Optimal working dilutions should be determined experimentally by the investigator. Prepare working dilution immediately before use. Immunohistochemistry 1:100 - 1:500
APPLICATION NOTES	Epitope exposure is recommended. Epitope exposure with citrate buffer will enhance staining. Likely to work with frozen sections.
IHC HUMAN CONTROLS	In some cases, the antibody may be diluted further than indicated. Breast Carcinoma, Colon Carcinoma, Ovarian Carcinoma, Pancreatic Islet Cell Tumor, Prostate Carcinoma, Skin Basal Cell Carcinoma, Small Cell Lung Cancer
IHC MOUSE CONTROLS	Squamous Cell Carcinoma, Teratoma
ADDITIONAL INFO	https://www.bethyl.com/product/IHC-00210 Use the link above to view SDS, a current list of citations, and other product specific information.

This document certifies that this product has met all of the quality control standards defined by Bethyl Laboratories, Inc.
Eric McIntush, PhD | Chief Scientific Officer Date: June 21, 2019

**Detection of human SUPT5H by immunohistochemistry.**

Sample: FFPE section of human breast adenocarcinoma. *Antibody:* Affinity purified rabbit anti-SUPT5H (Cat. No. IHC-00210) used at a dilution of 1:250. *Detection:* DAB

**Detection of mouse SUPT5H by immunohistochemistry.**

Sample: FFPE section of mouse teratoma. *Antibody:* Affinity purified rabbit anti-SUPT5H (Cat. No. IHC-00210) used at a dilution of 1:250. *Detection:* DAB