

ACINUS/ACN1 IHC Antibody

Rabbit Polyclonal

Antigen Affinity Purified

Protein ID NP_055792.1

Catalog No. IHC-00215

GeneID 22985

Lot No. IHC-00215-1



APPLICATIONS	IHC
SPECIES REACTIVITY	Human
PRESUMED REACTIVITY	Based on 100% sequence identity, this antibody is predicted to react with Mouse, Rat, <i>X. laevis</i> , <i>X. tropicalis</i> , Bovine, Dog, Horse, Rabbit, Guinea pig_10141, Pig, Panda, Orangutan, Monkey and Gorilla
AMOUNT	100 μ l
CONCENTRATION	250 μ g/ml
STORAGE/SHELF LIFE	2 - 8 $^{\circ}$ C / 1 year from date of receipt
PHYSICAL STATE	Liquid
BUFFER	Tris-buffered Saline containing 0.1% BSA and 0.09% Sodium Azide
ISOTYPE	IgG
ORIGIN	USA
PRODUCTION PROCEDURES	Antibody was affinity purified using an epitope specific to ACINUS/ACN1 immobilized on solid support.

The epitope recognized by IHC-00215 maps to a region between residue 1291 and the C-terminus (residue 1341) of human apoptotic chromatin condensation inducer 1 using the numbering given in entry NP_055792.1 (GeneID 22985).

Antibody concentration was determined by extinction coefficient: absorbance at 280 nm of 1.4 equals 1.0 mg of IgG.

APPLICATIONS Centrifuge tube to remove product from lid. Optimal working dilutions should be determined experimentally by the investigator. Prepare working dilution immediately before use.

Immunohistochemistry 1:100 – 1:500

APPLICATION NOTES Epitope exposure is recommended.

Epitope exposure with citrate buffer will enhance staining.

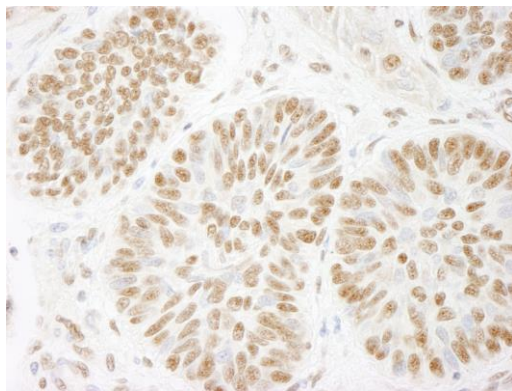
Likely to work with frozen sections.

In some cases, the antibody may be diluted further than indicated.

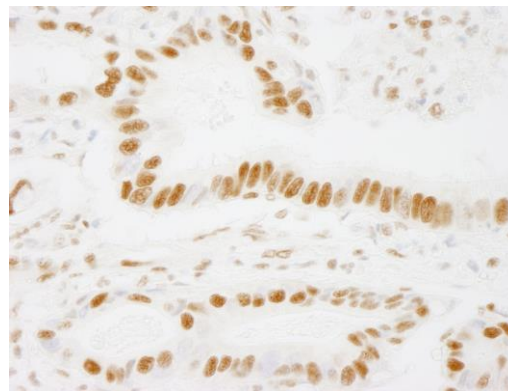
ADDITIONAL INFO <https://www.bethyl.com/product/IHC-00215>

Use the link above to view SDS, a current list of citations, and other product specific information.

This document certifies that this product has met all of the quality control standards defined by Bethyl Laboratories, Inc.
Eric McIntush, PhD | Chief Scientific Officer Date: June 21, 2019



Detection of human ACINUS/ACN1 by immunohistochemistry. *Sample:* FFPE section of human basal cell carcinoma. *Antibody:* Affinity purified rabbit anti-ACINUS/ACN1 (Cat. No. IHC-00215) used at a dilution of 1:250. *Detection:* DAB



Detection of human ACINUS/ACN1 by immunohistochemistry. *Sample:* FFPE section of human stomach adenocarcinoma. *Antibody:* Affinity purified rabbit anti-ACINUS/ACN1 (Cat. No. IHC-00215) used at a dilution of 1:250. *Detection:* DAB