

USP47 IHC Antibody

Rabbit Polyclonal

Antigen Affinity Purified

Protein ID NP_060414.3

Catalog No. IHC-00235

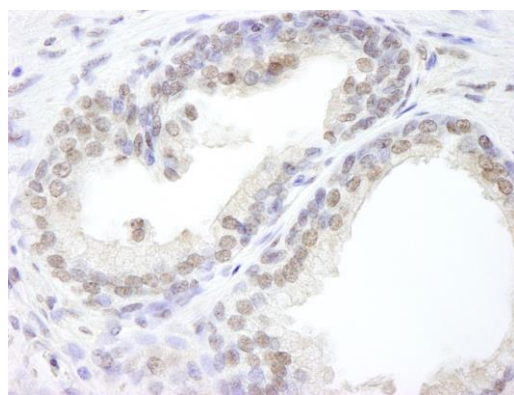
GeneID 55031

Lot No. IHC-00235-1

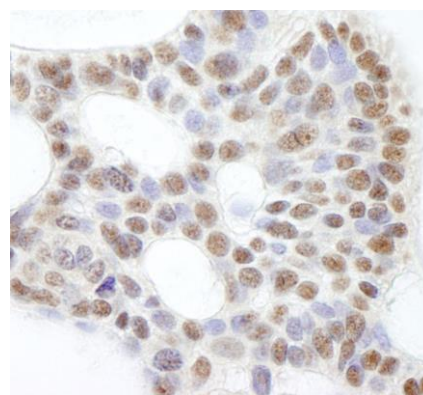


APPLICATIONS	IHC, IHC-IF
SPECIES REACTIVITY	Human, Mouse
PRESUMED REACTIVITY	Based on 100% sequence identity, this antibody is predicted to react with Chicken, Turkey, Bovine, Dog, Rabbit, Pig, Panda, Orangutan, Monkey, Gorilla, Chimpanzee and Naked mole rat
AMOUNT	100 µl
CONCENTRATION	250 µg/ml
STORAGE/SHELF LIFE	2 – 8° C / 1 year from date of receipt
PHYSICAL STATE	Liquid
BUFFER	Tris-buffered Saline containing 0.1% BSA and 0.09% Sodium Azide
ISOTYPE	IgG
ORIGIN	USA
PRODUCTION PROCEDURES	<p>Antibody was affinity purified using an epitope specific to USP47 immobilized on solid support.</p> <p>The epitope recognized by IHC-00235 maps to a region between residue 1237 and the C-terminus (residue 1287) of human ubiquitin specific peptidase 47 using the numbering given in entry NP_060414.3 (GeneID 55031).</p> <p>Antibody concentration was determined by extinction coefficient: absorbance at 280 nm of 1.4 equals 1.0 mg of IgG.</p>
APPLICATIONS	<p>Centrifuge tube to remove product from lid. Optimal working dilutions should be determined experimentally by the investigator. Prepare working dilution immediately before use.</p> <p>Immunohistochemistry 1:100 – 1:500</p> <p>Immunofluorescence 1:50 – 1:500 (IHC)</p>
APPLICATION NOTES	<p>Epitope exposure is recommended.</p> <p>Epitope exposure with citrate buffer will enhance staining.</p> <p>Likely to work with frozen sections.</p> <p>In some cases, the antibody may be diluted further than indicated.</p>
IHC HUMAN CONTROLS	Colon Carcinoma, Linitis Plastica Stomach Cancer, Metastatic Lymph Node, Non-Small Cell Lung Cancer, Ovarian Carcinoma, Pancreatic Islet Cell Tumor, Prostate Carcinoma, Skin Basal Cell Carcinoma, Small Cell Lung Cancer, Stomach Adenocarcinoma
IHC MOUSE CONTROLS	Teratoma
ADDITIONAL INFO	<p>https://www.bethyl.com/product/IHC-00235</p> <p>Use the link above to view SDS, a current list of citations, and other product specific information.</p>

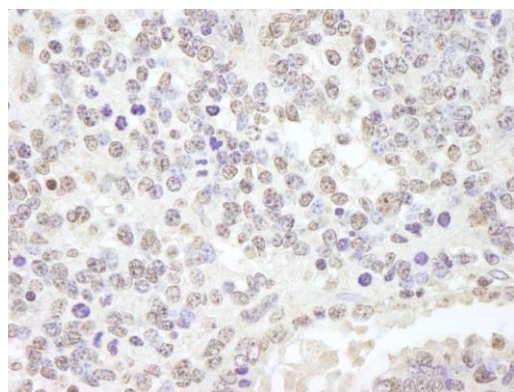
This document certifies that this product has met all of the quality control standards defined by Bethyl Laboratories, Inc.
Eric McIntush, PhD | Chief Scientific Officer Date: June 21, 2019



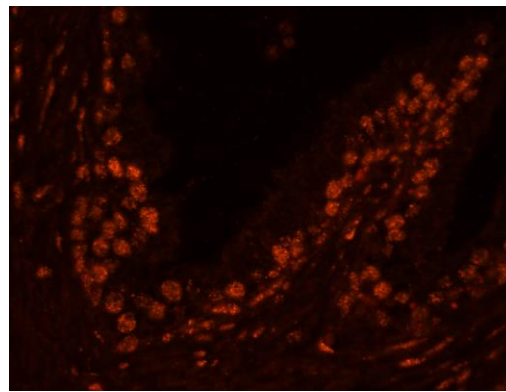
Detection of human USP47 by immunohistochemistry.
Sample: FFPE section of human prostate carcinoma.
Antibody: Affinity purified rabbit anti-USP47 (Cat. No. IHC-00235) used at a dilution of 1:500. *Detection:* DAB



Detection of human USP47 by immunohistochemistry.
Sample: FFPE section of human basal cell carcinoma.
Antibody: Affinity purified rabbit anti-USP47 (Cat. No. IHC-00235) used at a dilution of 1:500. *Detection:* DAB



Detection of mouse USP47 by immunohistochemistry.
Sample: FFPE section of mouse teratoma. *Antibody:* Affinity purified rabbit anti-USP47 (Cat. No. IHC-00235) used at a dilution of 1:250. *Detection:* DAB



Detection of human USP47 by immunohistochemistry.
Sample: FFPE section of human prostate adenocarcinoma.
Antibody: Affinity purified rabbit anti-USP47 (Cat. No. IHC-00235) used at a dilution of 1:100. *Detection:* Red-fluorescent Alexa Fluor® 555 goat anti-rabbit IgG (Invitrogen) used at a dilution of 1:500.