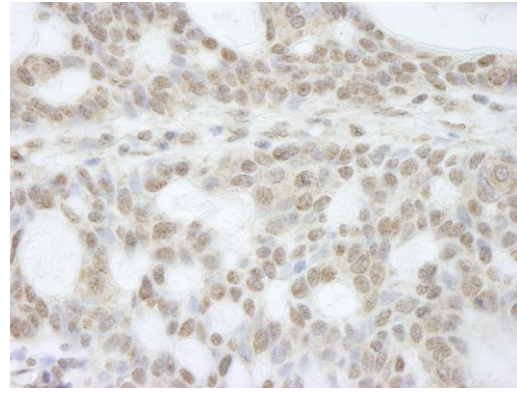


Detection of human ATRX by immunohistochemistry.
Sample: FFPE section of human breast carcinoma.
Antibody: Affinity purified rabbit anti-ATRX (Cat. No. IHC-00236) used at a dilution of 1:250. *Detection:* DAB



Detection of human ATRX by immunohistochemistry.
Sample: FFPE section of human basal cell carcinoma.
Antibody: Affinity purified rabbit anti-ATRX (Cat. No. IHC-00236) used at a dilution of 1:250. *Detection:* DAB