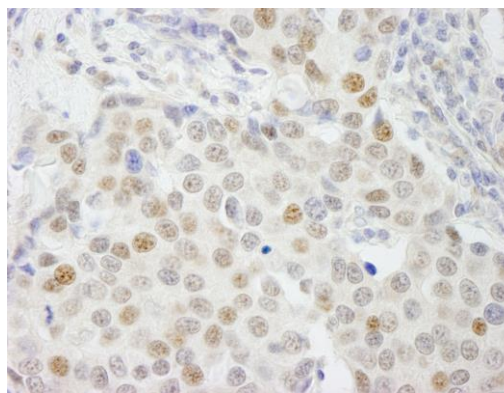


Detection of human GTF3C4/TFIIIC90 by immunohistochemistry. *Sample:* FFPE section of human thyroid carcinoma. *Antibody:* Affinity purified rabbit anti-GTF3C4/TFIIIC90 (Cat. No. IHC-00256) used at a dilution of 1:500. *Detection:* DAB



Detection of human GTF3C4/TFIIIC90 by immunohistochemistry. *Sample:* FFPE section of human breast carcinoma. *Antibody:* Affinity purified rabbit anti-GTF3C4/TFIIIC90 (Cat. No. IHC-00256) used at a dilution of 1:100. *Detection:* DAB