

# XPF/ERCC4 IHC Antibody

Rabbit Polyclonal

Antigen Affinity Purified

Protein ID AAB07689.1

Catalog No. IHC-00263

GeneID 2072

Lot No. IHC-00263-1



<b>APPLICATIONS</b>	IHC
<b>SPECIES REACTIVITY</b>	Human
<b>PRESUMED REACTIVITY</b>	Based on 100% sequence identity, this antibody is predicted to react with Monkey, Gorilla, Chimpanzee and Crab-eating macaque
<b>AMOUNT</b>	100 µl
<b>CONCENTRATION</b>	250 µg/ml
<b>STORAGE/SHELF LIFE</b>	2 – 8° C / 1 year from date of receipt
<b>PHYSICAL STATE</b>	Liquid
<b>BUFFER</b>	Tris-buffered Saline containing 0.1% BSA and 0.09% Sodium Azide
<b>ISOTYPE</b>	IgG
<b>ORIGIN</b>	USA
<b>PRODUCTION PROCEDURES</b>	Antibody was affinity purified using an epitope specific to XPF/ERCC4 immobilized on solid support.

The epitope recognized by IHC-00263 maps to a region between residue 855 and 905 of human xeroderma pigmentosum, complementation group F (excision repair cross-complementing rodent repair deficiency, complementation group 4) using the numbering given in entry AAB07689.1 (GeneID 2072).

Antibody concentration was determined by extinction coefficient: absorbance at 280 nm of 1.4 equals 1.0 mg of IgG.

**APPLICATIONS** Centrifuge tube to remove product from lid. Optimal working dilutions should be determined experimentally by the investigator. Prepare working dilution immediately before use.

Immunohistochemistry 1:100 – 1:500

**APPLICATION NOTES** Epitope exposure is recommended.

Epitope exposure with citrate buffer will enhance staining.

Likely to work with frozen sections.

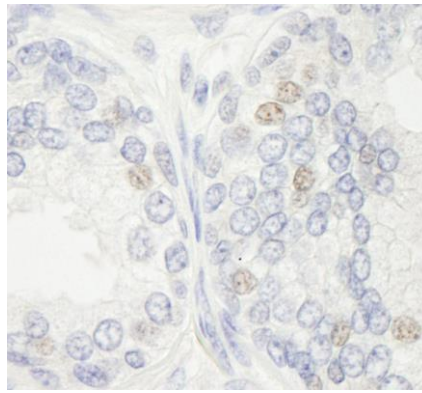
In some cases, the antibody may be diluted further than indicated.

**IHC HUMAN CONTROLS** Breast Carcinoma, Prostate Carcinoma

**ADDITIONAL INFO** <https://www.bethyl.com/product/IHC-00263>

Use the link above to view SDS, a current list of citations, and other product specific information.

This document certifies that this product has met all of the quality control standards defined by Bethyl Laboratories, Inc.  
Eric McIntush, PhD | Chief Scientific Officer Date: June 21, 2019



**Detection of human XPF/ERCC4 by immunohistochemistry.** *Sample:* FFPE section of human prostate carcinoma. *Antibody:* Affinity purified rabbit anti-XPF/ERCC4 (Cat. No. IHC-00263) used at a dilution of 1:500. *Detection:* DAB