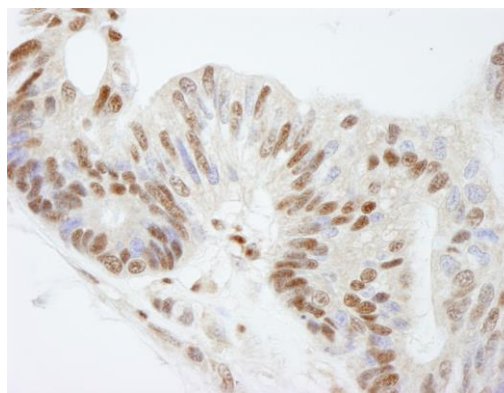


**Detection of human FKBP5/FKBP51 by immunohistochemistry.** *Sample:* FFPE section of human breast carcinoma. *Antibody:* Affinity purified rabbit anti-FKBP5/FKBP51 (Cat. No. IHC-00289) used at a dilution of 1:500. *Detection:* DAB



**Detection of human FKBP5/FKBP51 by immunohistochemistry.** *Sample:* FFPE section of human ovarian carcinoma. *Antibody:* Affinity purified rabbit anti-FKBP5/FKBP51 (Cat. No. IHC-00289) used at a dilution of 1:500. *Detection:* DAB