

FASN IHC Antibody

Rabbit Polyclonal

Antigen Affinity Purified

Protein ID NP_004095.4

Catalog No. IHC-00305

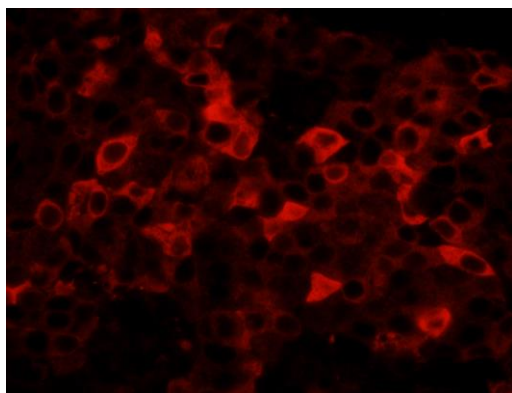
GeneID 2194

Lot No. IHC-00305-1

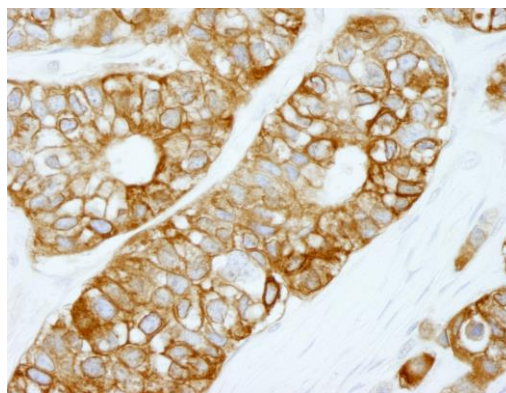


APPLICATIONS	IHC, IHC-IF
SPECIES REACTIVITY	Human, Mouse
PRESUMED REACTIVITY	Based on 100% sequence identity, this antibody is predicted to react with Rat, Goat, Bovine, Dog, Horse, Rabbit, Guinea pig_10141, Monkey, Gorilla, Chimpanzee and thirteen-lined ground squirrel
AMOUNT	100 µl
CONCENTRATION	250 µg/ml
STORAGE/SHELF LIFE	2 - 8° C / 1 year from date of receipt
PHYSICAL STATE	Liquid
BUFFER	Tris-buffered Saline containing 0.1% BSA and 0.09% Sodium Azide
ISOTYPE	IgG
ORIGIN	USA
PRODUCTION PROCEDURES	<p>Antibody was affinity purified using an epitope specific to FASN immobilized on solid support.</p> <p>The epitope recognized by IHC-00305 maps to a region between residue 2462 and 2511 of human fatty acid synthase using the numbering given in entry NP_004095.4 (GeneID 2194).</p> <p>Antibody concentration was determined by extinction coefficient: absorbance at 280 nm of 1.4 equals 1.0 mg of IgG.</p>
APPLICATIONS	<p>Centrifuge tube to remove product from lid. Optimal working dilutions should be determined experimentally by the investigator. Prepare working dilution immediately before use.</p> <p>Immunohistochemistry 1:100 - 1:500</p> <p>Immunofluorescence 1:50 - 1:500 (IHC)</p>
APPLICATION NOTES	<p>Epitope exposure is recommended.</p> <p>Epitope exposure with citrate buffer will enhance staining.</p> <p>Likely to work with frozen sections.</p> <p>In some cases, the antibody may be diluted further than indicated.</p>
IHC HUMAN CONTROLS	Colon Carcinoma, Non-Small Cell Lung Cancer, Prostate Carcinoma, Skin Basal Cell Carcinoma, Skin Squamous Cell Carcinoma
IHC MOUSE CONTROLS	Colon Carcinoma CT26, Renal Cell Carcinoma
ADDITIONAL INFO	<p>https://www.bethyl.com/product/IHC-00305</p> <p>Use the link above to view SDS, a current list of citations, and other product specific information.</p>

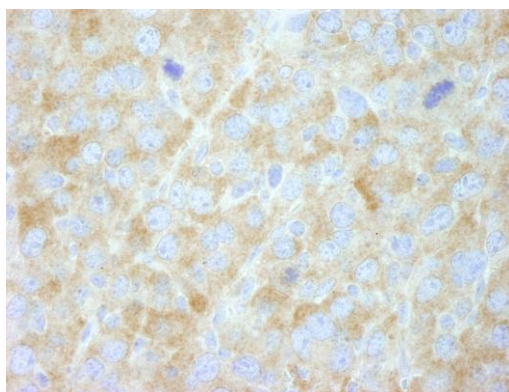
This document certifies that this product has met all of the quality control standards defined by Bethyl Laboratories, Inc.
Eric McIntush, PhD | Chief Scientific Officer Date: June 21, 2019



Detection of human FASN by IHC-IF. *Sample:* FFPE section of human breast carcinoma. *Antibody:* Affinity purified rabbit anti-FASN (Cat. No. IHC-00305) used at a dilution of 1:100. *Detection:* Red-fluorescent goat anti-rabbit IgG highly cross-adsorbed Antibody Hilyte Plus™ 555 used at a dilution of 1:100.



Detection of human FASN by immunohistochemistry. *Sample:* FFPE section of breast carcinoma. *Antibody:* Affinity purified rabbit anti-FASN (Cat. No. IHC-00305) used at a dilution of 1:250. *Detection:* DAB



Detection of mouse FASN by immunohistochemistry. *Sample:* FFPE section of mouse renal cell carcinoma. *Antibody:* Affinity purified rabbit anti-FASN (Cat. No. IHC-00305) used at a dilution of 1:250. *Detection:* DAB