

# ZNF318/TZF IHC Antibody

Rabbit Polyclonal

Antigen Affinity Purified Protein ID AAD17298.1

Catalog No. IHC-00312 GeneID 24149

Lot No. IHC-00312-1



<b>APPLICATIONS</b>	IHC, IHC-IF
<b>SPECIES REACTIVITY</b>	Human
<b>PRESUMED REACTIVITY</b>	Based on 100% sequence identity, this antibody is predicted to react with Orangutan, Gorilla and Chimpanzee
<b>AMOUNT</b>	100 µl
<b>CONCENTRATION</b>	250 µg/ml
<b>STORAGE/SHELF LIFE</b>	2 – 8° C / 1 year from date of receipt
<b>PHYSICAL STATE</b>	Liquid
<b>BUFFER</b>	Tris-buffered Saline containing 0.1% BSA and 0.09% Sodium Azide
<b>ISOTYPE</b>	IgG
<b>ORIGIN</b>	USA
<b>PRODUCTION PROCEDURES</b>	Antibody was affinity purified using an epitope specific to ZNF318/TZF immobilized on solid support.

The epitope recognized by IHC-00312 maps to a region between residue 2049 and 2099 of human zinc finger protein 318 (testicular zinc finger) using the numbering given in entry AAD17298.1 (GeneID 24149).

Antibody concentration was determined by extinction coefficient: absorbance at 280 nm of 1.4 equals 1.0 mg of IgG.

**APPLICATIONS** Centrifuge tube to remove product from lid. Optimal working dilutions should be determined experimentally by the investigator. Prepare working dilution immediately before use.

Immunohistochemistry 1:100 – 1:500

Immunofluorescence 1:50 – 1:500 (IHC)

**APPLICATION NOTES** Epitope exposure is recommended.

Epitope exposure with citrate buffer will enhance staining.

Likely to work with frozen sections.

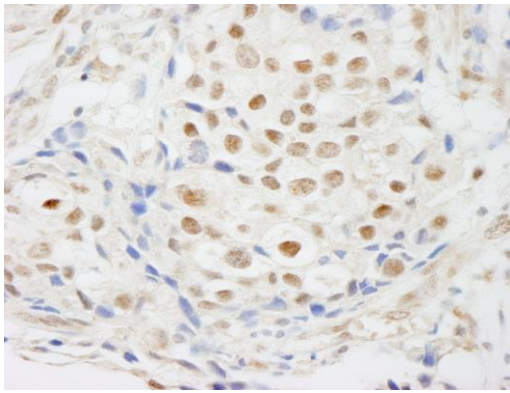
In some cases, the antibody may be diluted further than indicated.

**IHC HUMAN CONTROLS** Anaplastic Thyroid Carcinoma, Breast Carcinoma, Colon Carcinoma, Ovarian Carcinoma, Testicular Seminoma

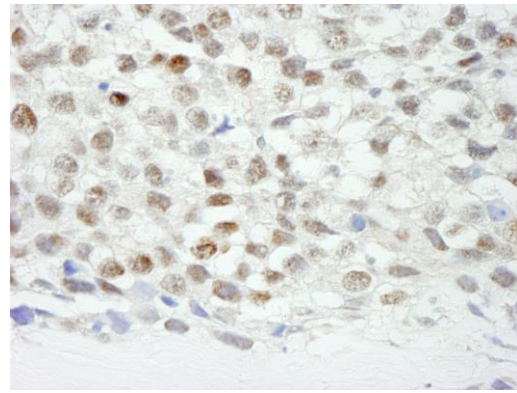
**ADDITIONAL INFO** <https://www.bethyl.com/product/IHC-00312>

Use the link above to view SDS, a current list of citations, and other product specific information.

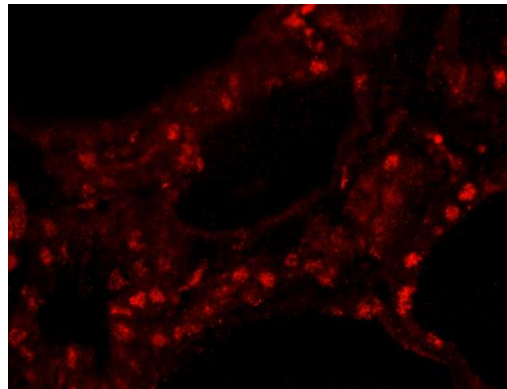
This document certifies that this product has met all of the quality control standards defined by Bethyl Laboratories, Inc.  
Eric McIntush, PhD | Chief Scientific Officer Date: June 21, 2019



**Detection of human ZNF318/TZF by immunohistochemistry.** *Sample:* FFPE section of human breast carcinoma. *Antibody:* Affinity purified rabbit anti-ZNF318/TZF (Cat. No. IHC-00312) used at a dilution of 1:250. *Detection:* DAB



**Detection of human ZNF318/TZF by immunohistochemistry.** *Sample:* FFPE section of human seminoma. *Antibody:* Affinity purified rabbit anti-ZNF318/TZF (Cat. No. IHC-00312) used at a dilution of 1:500. *Detection:* DAB



**Detection of human ZNF318/TZF by IHC-IF.** *Sample:* FFPE section of human anaplastic thyroid carcinoma *Antibody:* Affinity purified rabbit anti-ZNF318/TZF (Cat. No. IHC-00312) used at a dilution of 1:100. *Detection:* Red-fluorescent goat anti-rabbit IgG highly cross-adsorbed Antibody used at a dilution of 1:100.