

# CREB IHC Antibody

Rabbit Polyclonal

Antigen Affinity Purified

Protein ID NP\_604391.1

Catalog No. IHC-00332-T

GeneID 1385

Lot No. IHC-00332-T-1



<b>APPLICATIONS</b>	IHC, IHC-IF
<b>SPECIES REACTIVITY</b>	Human, Mouse
<b>AMOUNT</b>	10 µl
<b>CONCENTRATION</b>	250 µg/ml
<b>STORAGE/SHELF LIFE</b>	2 - 8° C / 1 year from date of receipt
<b>PHYSICAL STATE</b>	Liquid
<b>BUFFER</b>	Tris-buffered Saline containing 0.1% BSA and 0.09% Sodium Azide
<b>ISOTYPE</b>	IgG
<b>ORIGIN</b>	USA
<b>PRODUCTION PROCEDURES</b>	Antibody was affinity purified using an epitope specific to CREB immobilized on solid support.

The epitope recognized by IHC-00332-T maps to a region between residue 250 and 300 of human cAMP responsive element binding protein 1 using the numbering given in entry NP\_604391.1 (GeneID 1385).

Antibody concentration was determined by extinction coefficient: absorbance at 280 nm of 1.4 equals 1.0 mg of IgG.

**APPLICATIONS** Centrifuge tube to remove product from lid. Optimal working dilutions should be determined experimentally by the investigator. Prepare working dilution immediately before use.

Immunohistochemistry 1:100 - 1:500

Immunofluorescence 1:50 - 1:500  
(IHC)

**APPLICATION NOTES** Epitope exposure is recommended.

Epitope exposure with citrate buffer will enhance staining.

Likely to work with frozen sections.

In some cases, the antibody may be diluted further than indicated.

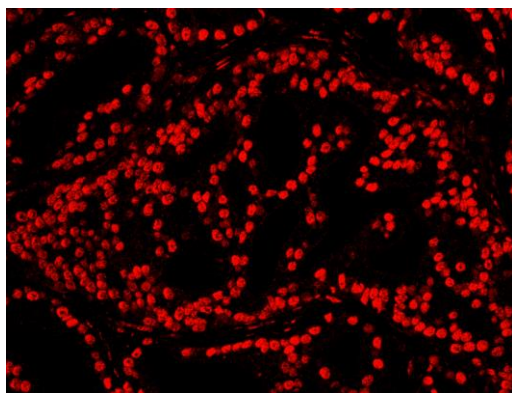
**IHC HUMAN CONTROLS** Breast Carcinoma, Colon Carcinoma, Metastatic Lymph Node, Ovarian Carcinoma, Pancreatic Islet Cell Tumor, Prostate Carcinoma, Skin Melanoma, Stomach Adenocarcinoma

**IHC MOUSE CONTROLS** Renal Cell Carcinoma, Teratoma

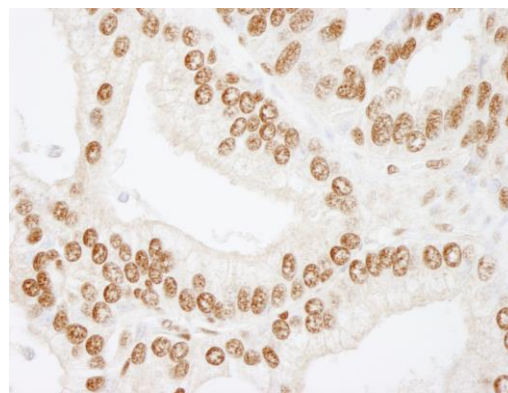
**ADDITIONAL INFO** <https://www.bethyl.com/product/IHC-00332-T>

Use the link above to view SDS, a current list of citations, and other product specific information.

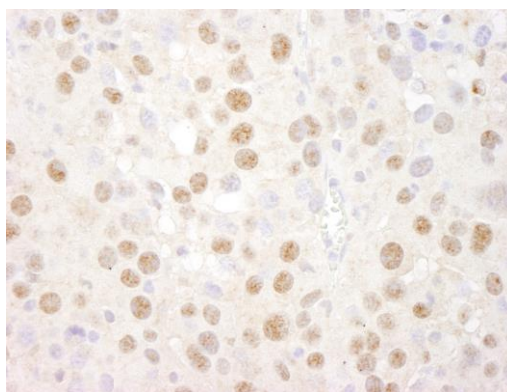
This document certifies that this product has met all of the quality control standards defined by Bethyl Laboratories, Inc.  
Eric McIntush, PhD | Chief Scientific Officer Date: June 21, 2019



**Detection of human CREB by IHC-IF.** *Sample:* FFPE section of human prostate carcinoma. *Antibody:* Affinity purified rabbit anti-CREB (Cat. No. IHC-00332-T) used at a dilution of 1:100. *Detection:* Red-fluorescent goat anti-rabbit IgG highly cross-adsorbed Antibody Hilyte Plus™ 555 used at a dilution of 1:100.



**Detection of human CREB by immunohistochemistry.** *Sample:* FFPE section of human prostate carcinoma. *Antibody:* Affinity purified rabbit anti-CREB (Cat. No. IHC-00332-T) used at a dilution of 1:250. *Detection:* DAB



**Detection of mouse CREB by immunohistochemistry.** *Sample:* FFPE section of mouse renal cell carcinoma. *Antibody:* Affinity purified rabbit anti-CREB (Cat. No. IHC-00332-T) used at a dilution of 1:250. *Detection:* DAB