

# XPA IHC Antibody

Rabbit Polyclonal

Antigen Affinity Purified

Protein ID NP\_000371.1

Catalog No. IHC-00344-T

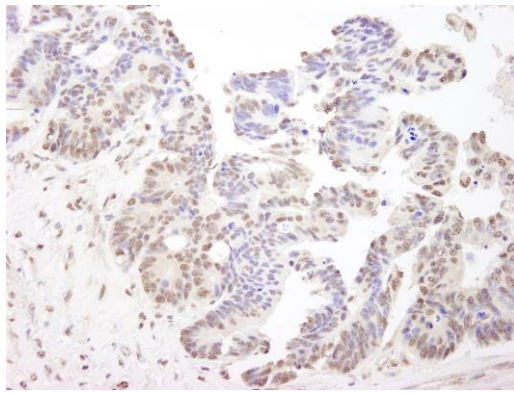
Gene ID 7507

Lot No. IHC-00344-T-1

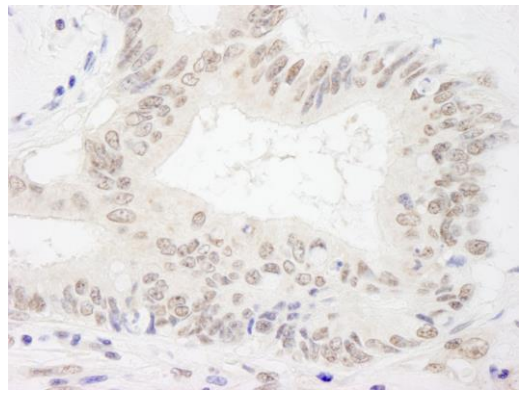


<b>APPLICATIONS</b>	IHC-P, IF
<b>REACTIVITY TESTED</b>	Human and mouse. Other species have not been tested.
<b>PRESUMED REACTIVITY</b>	Based on 100% sequence identity, this antibody is predicted to react with Rhesus Monkey, Gorilla, Crab-eating macaque and African elephant.
<b>ISOTYPE</b>	IgG
<b>AMOUNT</b>	10 µl
<b>STORAGE/SHELF LIFE</b>	2 - 8° C / 1 year from date of receipt
<b>PHYSICAL STATE</b>	Liquid
<b>BUFFER</b>	Tris-buffered Saline containing 0.1% BSA containing 0.09% Sodium Azide
<b>ORIGIN</b>	USA
<b>PRODUCTION PROCEDURES</b>	<p>Antibody was affinity purified using an epitope specific to XPA immobilized on solid support.</p> <p>The epitope recognized by IHC-00344-T maps to a region between residue 1 and 50 of human xeroderma pigmentosum, complementation group A using the numbering given in entry NP_000371.1 (GeneID 7507).</p> <p>Antibody concentration was determined by extinction coefficient: absorbance at 280 nm of 1.4 equals 1.0 mg of IgG.</p>
<b>APPLICATIONS</b>	<p>Centrifuge tube to remove product from lid. Optimal working dilutions should be determined experimentally by the investigator. Prepare working dilution immediately before use.</p> <p>Immunohistochemistry 1:100 - 1:500</p> <p>Immunofluorescence 1:50 - 1:500</p>
<b>APPLICATION NOTES</b>	<p>Epitope exposure is recommended.</p> <p>Epitope exposure with citrate buffer will enhance staining.</p> <p>Likely to work with frozen sections.</p> <p>In some cases, the antibody may be diluted further than indicated.</p>
<b>IHC HUMAN CONTROLS</b>	Breast Carcinoma, Colon Carcinoma, Ovarian Carcinoma, Prostate Carcinoma, Stomach Adenocarcinoma, Testicular Seminoma
<b>IHC MOUSE CONTROLS</b>	Teratoma
<b>ADDITIONAL INFO</b>	<p><a href="http://www.bethyl.com/product/IHC-00344-T">http://www.bethyl.com/product/IHC-00344-T</a></p> <p>Use the link above to view SDS, a current list of citations, and other product specific information.</p>

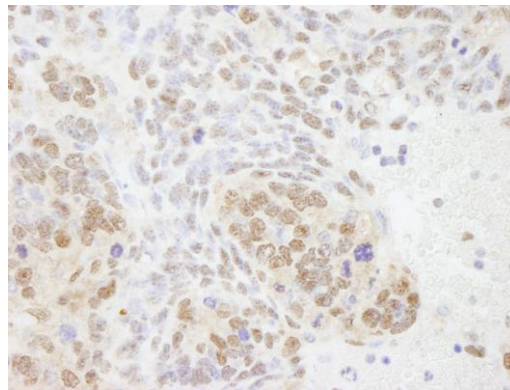
## XPA IHC Antibody: IHC-00344-T



**Detection of Human XPA by Immunohistochemistry.** *Sample:* FFPE section of human ovarian tumor. *Antibody:* Affinity purified rabbit anti-XPA (Cat. No. IHC-00344-T) used at a dilution of 1:500. *Detection:* DAB staining using Immunohistochemistry Accessory Kit (Cat. No. IHC-101).



**Detection of Human XPA by Immunohistochemistry.** *Sample:* FFPE section of human colon carcinoma. *Antibody:* Affinity purified rabbit anti-XPA (Cat. No. IHC-00344-T) used at a dilution of 1:500. *Detection:* DAB staining using Immunohistochemistry Accessory Kit (Cat. No. IHC-101).



**Detection of Mouse XPA by Immunohistochemistry.** *Sample:* FFPE section of mouse teratoma. *Antibody:* Affinity purified rabbit anti-XPA (Cat. No. IHC-00344-T) used at a dilution of 1:100. *Detection:* DAB staining using Immunohistochemistry Accessory Kit (Cat. No. IHC-101).