

NUP50 IHC Antibody

Rabbit Polyclonal

Antigen Affinity Purified

Protein ID NP_009103.2

Catalog No. IHC-00349

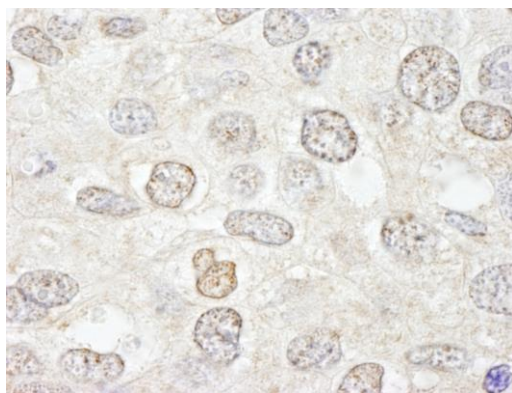
GeneID 10762

Lot No. IHC-00349-1



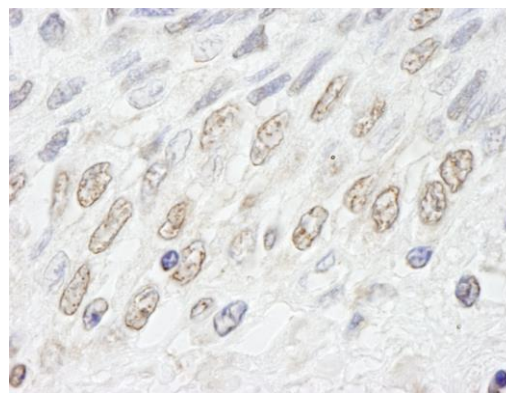
APPLICATIONS	IHC
SPECIES REACTIVITY	Human, Mouse
PRESUMED REACTIVITY	Based on 100% sequence identity, this antibody is predicted to react with Bovine, Orangutan, Monkey, Gorilla, Chimpanzee, Northern white-cheeked gibbon, Small-eared galago and Crab-eating macaque
AMOUNT	100 µl
CONCENTRATION	100 µg/ml
STORAGE/SHELF LIFE	2 - 8° C / 1 year from date of receipt
PHYSICAL STATE	Liquid
BUFFER	Tris-buffered Saline containing 0.1% BSA and 0.09% Sodium Azide
ISOTYPE	IgG
ORIGIN	USA
PRODUCTION PROCEDURES	<p>Antibody was affinity purified using an epitope specific to NUP50 immobilized on solid support.</p> <p>The epitope recognized by IHC-00349 maps to a region between residue 418 and 468 of human nucleoporin 50kDa using the numbering given in entry NP_009103.2 (GeneID 10762).</p> <p>Antibody concentration was determined by extinction coefficient: absorbance at 280 nm of 1.4 equals 1.0 mg of IgG.</p>
APPLICATIONS	<p>Centrifuge tube to remove product from lid. Optimal working dilutions should be determined experimentally by the investigator. Prepare working dilution immediately before use.</p> <p>Immunohistochemistry 1:100 - 1:500</p>
APPLICATION NOTES	<p>Epitope exposure is recommended.</p> <p>Epitope exposure with citrate buffer will enhance staining.</p> <p>Likely to work with frozen sections.</p>
IHC HUMAN CONTROLS	<p>In some cases, the antibody may be diluted further than indicated.</p> <p>Breast Carcinoma, Colon Carcinoma, Ovarian Carcinoma, Pancreatic Islet Cell Tumor, Prostate Carcinoma, Stomach Adenocarcinoma, Testicular Seminoma</p>
IHC MOUSE CONTROLS	Teratoma
ADDITIONAL INFO	<p>https://www.bethyl.com/product/IHC-00349</p> <p>Use the link above to view SDS, a current list of citations, and other product specific information.</p>

This document certifies that this product has met all of the quality control standards defined by Bethyl Laboratories, Inc.
Eric McIntush, PhD | Chief Scientific Officer Date: June 21, 2019

**Detection of human NUP50 by immunohistochemistry.**

Sample: FFPE section of human breast carcinoma.

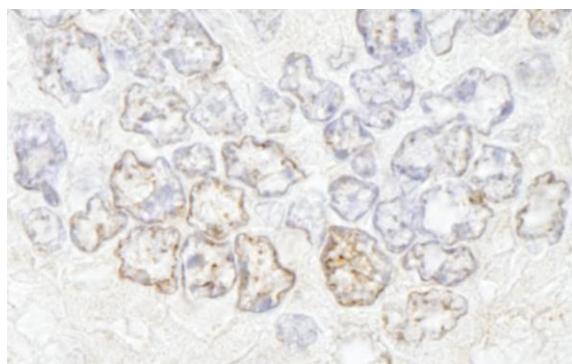
Antibody: Affinity purified rabbit anti-NUP50 (Cat. No. IHC-00349) used at a dilution of 1:500. *Detection:* DAB

**Detection of human NUP50 by immunohistochemistry.**

Sample: FFPE section of human prostate-nodular hypertrophy. *Antibody:* Affinity purified rabbit anti-NUP50

(Cat. No. IHC-00349) used at a dilution of 1:500. *Detection:* DAB

Detection: DAB

**Detection of mouse NUP50 by immunohistochemistry.**

Sample: FFPE section of mouse teratoma. *Antibody:* Affinity purified rabbit anti-NUP50 (Cat. No. IHC-00349) used at a dilution of 1:500. *Detection:* DAB