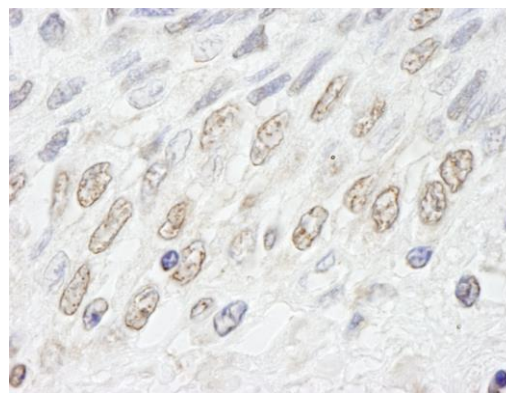
**Detection of human NUP50 by immunohistochemistry.**

Sample: FFPE section of human breast carcinoma.

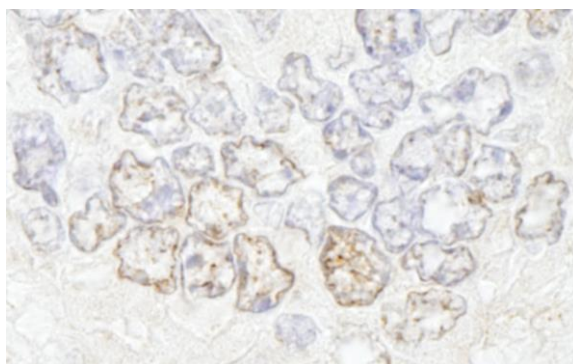
Antibody: Affinity purified rabbit anti-NUP50 (Cat. No. IHC-00349-T) used at a dilution of 1:500. *Detection:* DAB

**Detection of human NUP50 by immunohistochemistry.**

Sample: FFPE section of human prostate-nodular hypertrophy. *Antibody:* Affinity purified rabbit anti-NUP50

(Cat. No. IHC-00349-T) used at a dilution of 1:500. *Detection:* DAB

Detection: DAB

**Detection of mouse NUP50 by immunohistochemistry.**

Sample: FFPE section of mouse teratoma. *Antibody:* Affinity purified rabbit anti-NUP50 (Cat. No. IHC-00349-T) used at a dilution of 1:500. *Detection:* DAB