

# CTF18 IHC Antibody

Rabbit Polyclonal

Antigen Affinity Purified

Protein ID NP\_071375.1

Catalog No. IHC-00373

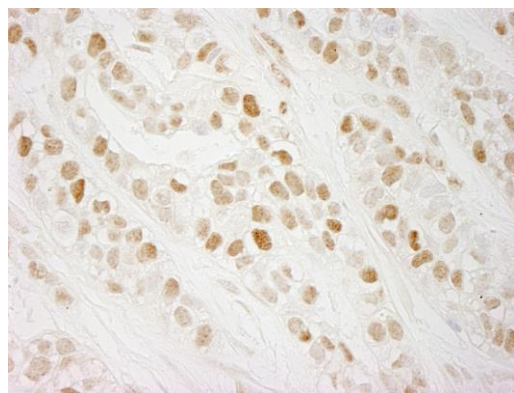
GeneID 63922

Lot No. IHC-00373-1

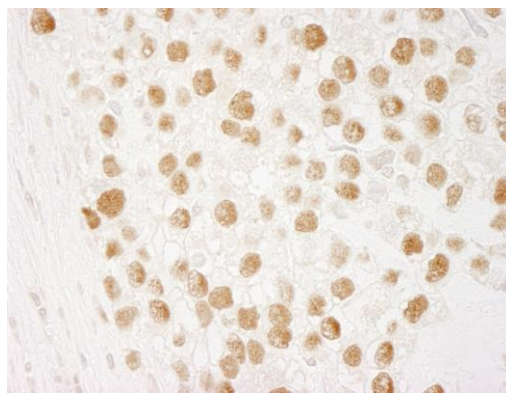


|                              |   |
|------------------------------|---|
| <b>APPLICATIONS</b>          | IHC, IHC-IF   |
| <b>SPECIES REACTIVITY</b>    | Human   |
| <b>PRESUMED REACTIVITY</b>   | Based on 100% sequence identity, this antibody is predicted to react with Monkey and Gorilla  |
| <b>AMOUNT</b>                | 100 µl  |
| <b>CONCENTRATION</b>         | 250 µg/ml   |
| <b>STORAGE/SHELF LIFE</b>    | 2 – 8° C / 1 year from date of receipt  |
| <b>PHYSICAL STATE</b>        | Liquid  |
| <b>BUFFER</b>                | Tris-buffered Saline containing 0.1% BSA and 0.09% Sodium Azide   |
| <b>ISOTYPE</b>               | IgG   |
| <b>ORIGIN</b>                | USA   |
| <b>PRODUCTION PROCEDURES</b> | <p>Antibody was affinity purified using an epitope specific to CTF18 immobilized on solid support.</p> <p>The epitope recognized by IHC-00373 maps to a region between residue 25 and 75 of human chromosome transmission fidelity factor 18 using the numbering given in entry NP_071375.1 (GeneID 63922).</p> <p>Antibody concentration was determined by extinction coefficient: absorbance at 280 nm of 1.4 equals 1.0 mg of IgG.</p> |
| <b>APPLICATIONS</b>          | <p>Centrifuge tube to remove product from lid. Optimal working dilutions should be determined experimentally by the investigator. Prepare working dilution immediately before use.</p> <p>Immunohistochemistry 1:100 – 1:500</p> <p>Immunofluorescence 1:50 – 1:500 (IHC)</p>   |
| <b>APPLICATION NOTES</b>     | <p>Epitope exposure is recommended.</p> <p>Epitope exposure with citrate buffer will enhance staining.</p> <p>Likely to work with frozen sections.</p>  |
| <b>IHC HUMAN CONTROLS</b>    | <p>In some cases, the antibody may be diluted further than indicated.</p> <p>Breast Carcinoma, Stomach Adenocarcinoma, Testicular Seminoma</p>  |
| <b>ADDITIONAL INFO</b>       | <p><a href="https://www.bethyl.com/product/IHC-00373">https://www.bethyl.com/product/IHC-00373</a></p> <p>Use the link above to view SDS, a current list of citations, and other product specific information.</p>  |

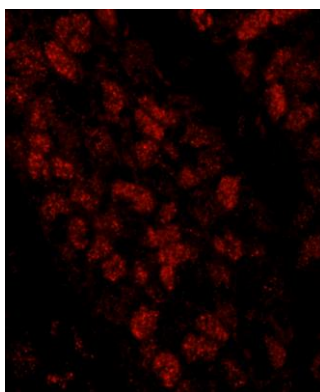
This document certifies that this product has met all of the quality control standards defined by Bethyl Laboratories, Inc.  
Eric McIntush, PhD | Chief Scientific Officer Date: June 21, 2019



**Detection of human CTF18 by immunohistochemistry.**  
*Sample:* FFPE section of human breast carcinoma.  
*Antibody:* Affinity purified rabbit anti-CTF18 (Cat. No. IHC-00373) used at a dilution of 1:250. *Detection:* DAB



**Detection of human CTF18 by immunohistochemistry.**  
*Sample:* FFPE section of human testicular seminoma.  
*Antibody:* Affinity purified rabbit anti-CTF18 (Cat. No. IHC-00373) used at a dilution of 1:250. *Detection:* DAB



**Detection of human CTF18 by immunohistochemistry.**  
*Sample:* FFPE section of human breast carcinoma.  
*Antibody:* Affinity purified rabbit anti-CTF18 (Cat. No. IHC-00373) used at a dilution of 1:100. *Detection:* Red-fluorescent goat anti-rabbit IgG highly cross-adsorbed Antibody used at a dilution of 1:100.