

CDK2 IHC Antibody

Rabbit Polyclonal

Antigen Affinity Purified

Protein ID NP_001789.2

Catalog No. IHC-00374-T

GeneID 1017

Lot No. IHC-00374-T-1



APPLICATIONS	IHC
SPECIES REACTIVITY	Human, Mouse
AMOUNT	10 µl
CONCENTRATION	250 µg/ml
STORAGE/SHELF LIFE	2 – 8° C / 1 year from date of receipt
PHYSICAL STATE	Liquid
BUFFER	Tris-buffered Saline containing 0.1% BSA and 0.09% Sodium Azide
ISOTYPE	IgG
ORIGIN	USA
PRODUCTION PROCEDURES	Antibody was affinity purified using an epitope specific to CDK2 immobilized on solid support.

The epitope recognized by IHC-00374-T maps to a region between residue 248 and 298 of human cyclin-dependent kinase 2 using the numbering given in entry NP_001789.2 (GeneID 1017).

Antibody concentration was determined by extinction coefficient: absorbance at 280 nm of 1.4 equals 1.0 mg of IgG.

APPLICATIONS Centrifuge tube to remove product from lid. Optimal working dilutions should be determined experimentally by the investigator. Prepare working dilution immediately before use.

Immunohistochemistry 1:100 – 1:500

APPLICATION NOTES Epitope exposure is recommended.

Epitope exposure with tris-EDTA pH9.0 buffer will enhance staining.

Likely to work with frozen sections.

In some cases, the antibody may be diluted further than indicated.

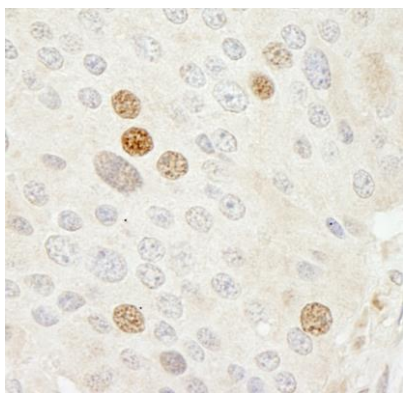
IHC HUMAN CONTROLS Breast Carcinoma, Colon Carcinoma, Hodgkins Lymphoma, Ovarian Carcinoma, Pancreatic Islet Cell Tumor, Prostate Carcinoma, Stomach Adenocarcinoma

IHC MOUSE CONTROLS Renal Cell Carcinoma, Teratoma

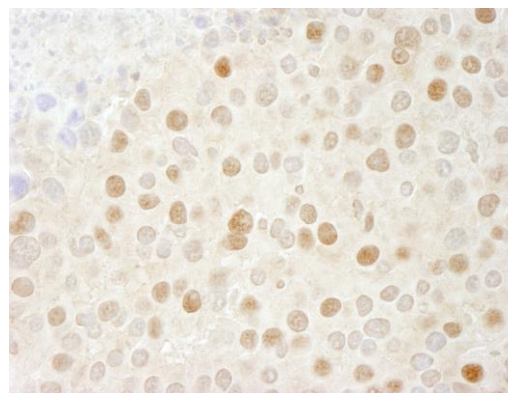
ADDITIONAL INFO <https://www.bethyl.com/product/IHC-00374-T>

Use the link above to view SDS, a current list of citations, and other product specific information.

This document certifies that this product has met all of the quality control standards defined by Bethyl Laboratories, Inc.
Eric McIntush, PhD | Chief Scientific Officer Date: June 21, 2019



Detection of human CDK2 by immunohistochemistry.
Sample: FFPE section of human pancreatic islet cell tumor.
Antibody: Affinity purified rabbit anti-CDK2 (Cat. No. IHC-00374-T) used at a dilution of 1:250. *Detection:* DAB



Detection of mouse CDK2 by immunohistochemistry.
Sample: FFPE section of mouse renal cell carcinoma
Antibody: Affinity purified rabbit anti-CDK2 (Cat. No. IHC-00374-T) used at a dilution of 1:250. *Detection:* DAB