

Ki-67 IHC Antibody

Rabbit Polyclonal

Antigen Affinity Purified

Protein ID CAA58026.1

Catalog No. IHC-00375-T

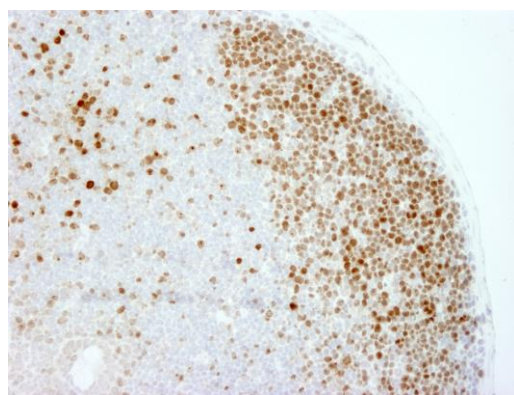
GeneID 17345

Lot No. IHC-00375-T-1

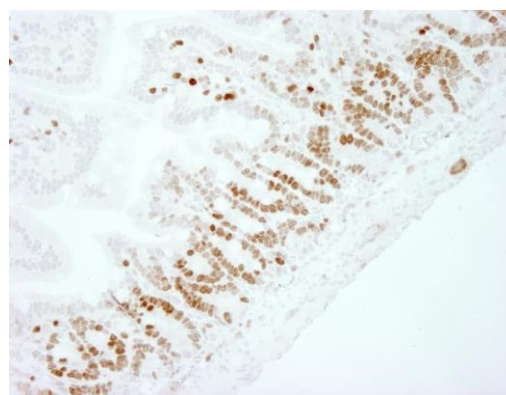


APPLICATIONS	IHC
SPECIES REACTIVITY	Mouse
AMOUNT	10 µl
CONCENTRATION	250 µg/ml
STORAGE/SHELF LIFE	2 – 8° C / 1 year from date of receipt
PHYSICAL STATE	Liquid
BUFFER	Tris-buffered Saline containing 0.1% BSA and 0.09% Sodium Azide
ISOTYPE	IgG
ORIGIN	USA
PRODUCTION PROCEDURES	Antibody was affinity purified using an epitope specific to Ki-67 immobilized on solid support. The epitope recognized by IHC-00375-T maps to a region between residues 1650 and 1700 of mouse Ki-67 using the numbering given in entry CAA58026.1 (GeneID 17345).
APPLICATIONS	Centrifuge tube to remove product from lid. Optimal working dilutions should be determined experimentally by the investigator. Prepare working dilution immediately before use. Immunohistochemistry 1:100 – 1:500
APPLICATION NOTES	Epitope exposure is recommended. Epitope exposure with tris-EDTA pH9.0 buffer will enhance staining. Likely to work with frozen sections. In some cases, the antibody may be diluted further than indicated.
IHC MOUSE CONTROLS	Intestine
ADDITIONAL INFO	https://www.bethyl.com/product/IHC-00375-T Use the link above to view SDS, a current list of citations, and other product specific information.

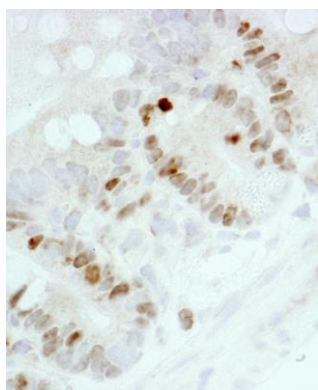
This document certifies that this product has met all of the quality control standards defined by Bethyl Laboratories, Inc.
Eric McIntush, PhD | Chief Scientific Officer Date: June 21, 2019



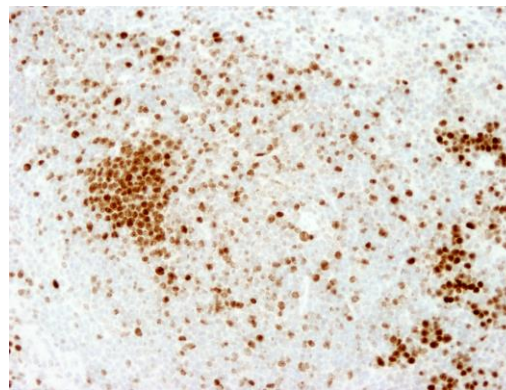
Detection of mouse Ki-67 by immunohistochemistry.
Sample: FFPE section of mouse Peyer's patch. *Antibody:* Affinity purified rabbit anti-mouse Ki-67 (Cat. No. IHC-00375-T) used at a dilution of 1:250. *Detection:* DAB



Detection of mouse Ki-67 by immunohistochemistry.
Sample: FFPE section of mouse intestine. *Antibody:* Affinity purified rabbit anti-mouse Ki-67 (Cat. No. IHC-00375-T) used at a dilution of 1:250. *Detection:* DAB



Detection of mouse Ki-67 by immunohistochemistry.
Sample: FFPE section of mouse intestine. *Antibody:* Affinity purified rabbit anti-mouse Ki-67 (Cat. No. IHC-00375-T) used at a dilution of 1:250. *Detection:* DAB



Detection of mouse Ki-67 by immunohistochemistry.
Sample: FFPE section of mouse spleen. *Antibody:* Affinity purified rabbit anti-mouse Ki-67 (Cat. No. IHC-00375-T) used at a dilution of 1:250. *Detection:* DAB