

# Ki-67 IHC Antibody

Rabbit Polyclonal

Antigen Affinity Purified

Protein ID NP\_002408.2

Catalog No. IHC-00395-T

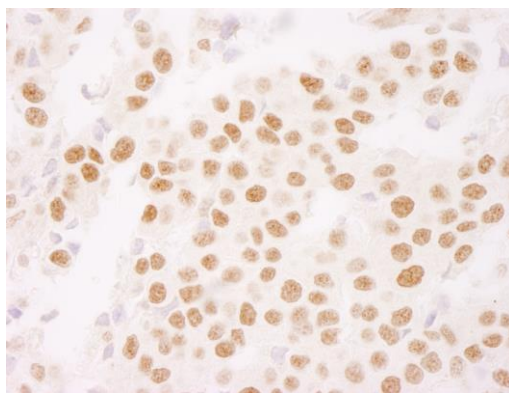
GeneID 4288

Lot No. IHC-00395-T-1



<b>APPLICATIONS</b>	IHC
<b>SPECIES REACTIVITY</b>	Human
<b>AMOUNT</b>	10 µl
<b>CONCENTRATION</b>	250 µg/ml
<b>STORAGE/SHELF LIFE</b>	2 – 8° C / 1 year from date of receipt
<b>PHYSICAL STATE</b>	Liquid
<b>BUFFER</b>	Tris-buffered Saline containing 0.1% BSA and 0.09% Sodium Azide
<b>ISOTYPE</b>	IgG
<b>ORIGIN</b>	USA
<b>PRODUCTION PROCEDURES</b>	Antibody was affinity purified using an epitope specific to Ki-67 immobilized on solid support. The epitope recognized by IHC-00395-T maps to a region between residues 1800 and 1850 of human Ki-67 using the numbering given in entry NP_002408.2 (GeneID 4288).
<b>APPLICATIONS</b>	Centrifuge tube to remove product from lid. Optimal working dilutions should be determined experimentally by the investigator. Prepare working dilution immediately before use.  Immunohistochemistry 1:100 – 1:500
<b>APPLICATION NOTES</b>	Epitope exposure is recommended.  Epitope exposure with tris-EDTA pH9.0 buffer will enhance staining.  Likely to work with frozen sections.
<b>IHC HUMAN CONTROLS</b>	In some cases, the antibody may be diluted further than indicated. Breast Carcinoma, Colon Carcinoma, Linitis Plastica Stomach Cancer, Ovarian Carcinoma, Pancreatic Islet Cell Tumor, Prostate Carcinoma, Skin Squamous Cell Carcinoma, Stomach Adenocarcinoma, Testicular Seminoma
<b>ADDITIONAL INFO</b>	<a href="https://www.bethyl.com/product/IHC-00395-T">https://www.bethyl.com/product/IHC-00395-T</a> Use the link above to view SDS, a current list of citations, and other product specific information.

This document certifies that this product has met all of the quality control standards defined by Bethyl Laboratories, Inc.  
Eric McIntush, PhD | Chief Scientific Officer Date: June 21, 2019

**Detection of human Ki-67 by immunohistochemistry.**

*Sample:* FFPE section of human breast carcinoma.

*Antibody:* Affinity purified rabbit anti-Ki-67 (Cat. No. IHC-00395-T) used at a dilution of 1:250. *Detection:* DAB