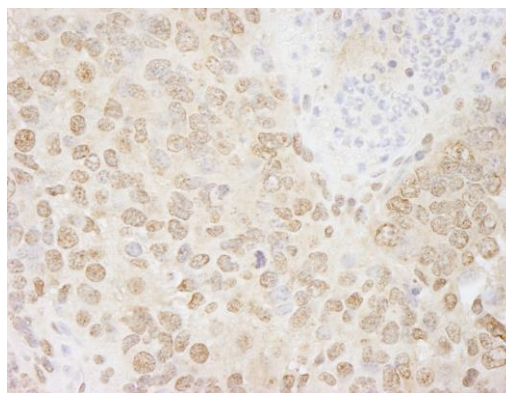


**Detection of human IKK-alpha by immunohistochemistry.**  
*Sample:* FFPE section of human ovarian tumor. *Antibody:* Affinity purified rabbit anti-IKK-alpha (Cat. No. IHC-00401) used at a dilution of 1:250. *Detection:* DAB



**Detection of mouse IKK-alpha by immunohistochemistry.**  
*Sample:* FFPE section of mouse teratoma. *Antibody:* Affinity purified rabbit anti-IKK-alpha (Cat. No. IHC-00401) used at a dilution of 1:250. *Detection:* DAB