

# DDX6 IHC Antibody

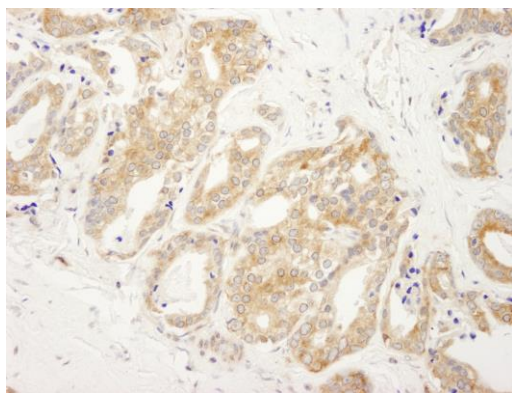
Rabbit Polyclonal

Antigen Affinity Purified	Protein ID	P26196
Catalog No. IHC-00430	GeneID	1656
Lot No. IHC-00430-1		

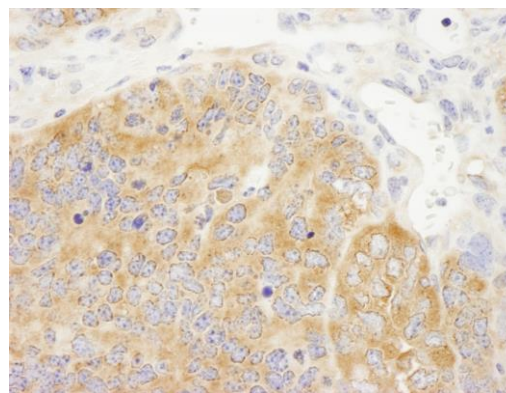


<b>APPLICATIONS</b>	IHC
<b>SPECIES REACTIVITY</b>	Human, Mouse
<b>PRESUMED REACTIVITY</b>	Based on 100% sequence identity, this antibody is predicted to react with Rat, Chicken, Turkey, Bovine, Dog, Horse, Rabbit, Guinea pig_10141, Pig, Panda, Orangutan, Monkey, Gorilla and Chimpanzee
<b>AMOUNT</b>	100 µl
<b>CONCENTRATION</b>	250 µg/ml
<b>STORAGE/SHELF LIFE</b>	2 - 8° C / 1 year from date of receipt
<b>PHYSICAL STATE</b>	Liquid
<b>BUFFER</b>	Tris-buffered Saline containing 0.1% BSA and 0.09% Sodium Azide
<b>ISOTYPE</b>	IgG
<b>ORIGIN</b>	USA
<b>PRODUCTION PROCEDURES</b>	Antibody was affinity purified using an epitope specific to DDX6 immobilized on solid support.  The epitope recognized by IHC-00430 maps to a region between residues 1 and 50 of human DEAD (Asp-Glu-Ala-Asp) box polypeptide 6 using the numbering given Swiss-Prot entry P26196 (GeneID 1656).
<b>APPLICATIONS</b>	Centrifuge tube to remove product from lid. Optimal working dilutions should be determined experimentally by the investigator. Prepare working dilution immediately before use.  Immunohistochemistry 1:100 - 1:500
<b>APPLICATION NOTES</b>	Epitope exposure is recommended.  Epitope exposure with tris-EDTA pH9.0 buffer will enhance staining.  Likely to work with frozen sections.
<b>IHC HUMAN CONTROLS</b>	In some cases, the antibody may be diluted further than indicated. Breast Carcinoma, Colon Carcinoma, Non-Small Cell Lung Cancer, Ovarian Carcinoma, Prostate Carcinoma, Stomach Adenocarcinoma, Testicular Seminoma
<b>IHC MOUSE CONTROLS</b>	Colon Carcinoma CT26, Renal Cell Carcinoma, Teratoma
<b>ADDITIONAL INFO</b>	<a href="https://www.bethyl.com/product/IHC-00430">https://www.bethyl.com/product/IHC-00430</a> Use the link above to view SDS, a current list of citations, and other product specific information.

This document certifies that this product has met all of the quality control standards defined by Bethyl Laboratories, Inc.  
Eric McIntush, PhD | Chief Scientific Officer Date: June 21, 2019



**Detection of human DDX6 by immunohistochemistry.**  
*Sample:* FFPE section of human prostate carcinoma.  
*Antibody:* Affinity purified rabbit anti-DDX6 (Cat. No. IHC-00430) used at a dilution of 1:250. *Detection:* DAB



**Detection of mouse DDX6 by immunohistochemistry.**  
*Sample:* FFPE section of mouse renal cell carcinoma.  
*Antibody:* Affinity purified rabbit anti-DDX6 (Cat. No. IHC-00430) used at a dilution of 1:250. *Detection:* DAB