

Paxillin IHC Antibody

Rabbit Polyclonal

Antigen Affinity Purified

Protein ID P49023

Catalog No. IHC-00436

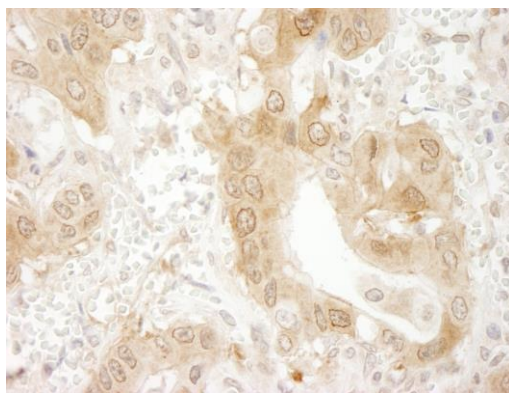
GeneID 5829

Lot No. IHC-00436-1



APPLICATIONS	IHC
SPECIES REACTIVITY	Human
PRESUMED REACTIVITY	Based on 100% sequence identity, this antibody is predicted to react with Bovine, Dog, Pig, Panda, Orangutan, Monkey, Gorilla, Chimpanzee, Northern white-cheeked gibbon and Little brown bat
AMOUNT	100 µl
CONCENTRATION	250 µg/ml
STORAGE/SHELF LIFE	2 - 8° C / 1 year from date of receipt
PHYSICAL STATE	Liquid
BUFFER	Tris-buffered Saline containing 0.1% BSA and 0.09% Sodium Azide
ISOTYPE	IgG
ORIGIN	USA
PRODUCTION PROCEDURES	Antibody was affinity purified using an epitope specific to Paxillin immobilized on solid support. The epitope recognized by IHC-00436 maps to a region between residues 1 and 50 of human Paxillin using the numbering given in Swiss-Prot entry P49023 (GeneID 5829).
APPLICATIONS	Centrifuge tube to remove product from lid. Optimal working dilutions should be determined experimentally by the investigator. Prepare working dilution immediately before use. Immunohistochemistry 1:100 - 1:500
APPLICATION NOTES	Epitope exposure is recommended. Epitope exposure with tris-EDTA pH9.0 buffer will enhance staining. Likely to work with frozen sections. In some cases, the antibody may be diluted further than indicated.
IHC HUMAN CONTROLS	Breast Carcinoma, Colon Carcinoma, Non-Small Cell Lung Cancer, Prostate Carcinoma
ADDITIONAL INFO	https://www.bethyl.com/product/IHC-00436 Use the link above to view SDS, a current list of citations, and other product specific information.

This document certifies that this product has met all of the quality control standards defined by Bethyl Laboratories, Inc.
Eric McIntush, PhD | Chief Scientific Officer Date: June 21, 2019

**Detection of human Paxillin by immunohistochemistry.**

Sample: FFPE section of human non-small cell lung cancer.

Antibody: Affinity purified rabbit anti-Paxillin (Cat. No. IHC-00436) used at a dilution of 1:250. *Detection:* DAB