

# RPL7 IHC Antibody

Rabbit Polyclonal

Antigen Affinity Purified

Protein ID NP\_000962.2

Catalog No. IHC-00455

GeneID 6129

Lot No. IHC-00455-1



<b>APPLICATIONS</b>	IHC, IHC-IF
<b>SPECIES REACTIVITY</b>	Human, Mouse
<b>PRESUMED REACTIVITY</b>	Based on 100% sequence identity, this antibody is predicted to react with Rat, X. tropicalis, Chicken, Turkey, Bovine, Dog, Horse, Rabbit, Guinea pig_10141, Pig, Panda, Orangutan, Monkey and Gorilla
<b>AMOUNT</b>	100 µl
<b>CONCENTRATION</b>	100 µg/ml
<b>STORAGE/SHELF LIFE</b>	2 - 8° C / 1 year from date of receipt
<b>PHYSICAL STATE</b>	Liquid
<b>BUFFER</b>	Tris-buffered Saline containing 0.1% BSA and 0.09% Sodium Azide
<b>ISOTYPE</b>	IgG
<b>ORIGIN</b>	USA
<b>PRODUCTION PROCEDURES</b>	Antibody was affinity purified using an epitope specific to RPL7 immobilized on solid support.

The epitope recognized by IHC-00455 maps to a region between residue 200 and the C-terminus (residue 248) of human Ribosomal Protein L7 using the numbering given in entry NP\_000962.2 (GeneID 6129).

Immunoglobulin concentration was determined by extinction coefficient: absorbance at 280 nm of 1.4 equals 1.0 mg of IgG.

**APPLICATIONS** Centrifuge tube to remove product from lid. Optimal working dilutions should be determined experimentally by the investigator. Prepare working dilution immediately before use.

Immunohistochemistry 1:100 - 1:500

Immunofluorescence (IHC) 1:50 - 1:500

**APPLICATION NOTES** Epitope exposure is recommended.

Epitope exposure with tris-EDTA pH9.0 buffer will enhance staining.

Likely to work with frozen sections.

In some cases, the antibody may be diluted further than indicated.

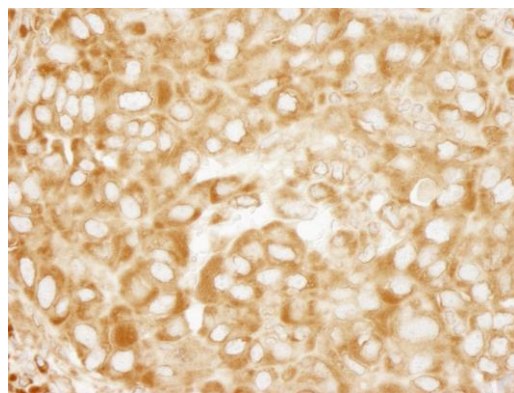
**IHC HUMAN CONTROLS** Breast Carcinoma, Colon Carcinoma, Non-Small Cell Lung Cancer, Ovarian Carcinoma, Prostate Carcinoma, Stomach Adenocarcinoma, Testicular Seminoma

**IHC MOUSE CONTROLS** Colon Carcinoma CT26, Renal Cell Carcinoma, Teratoma

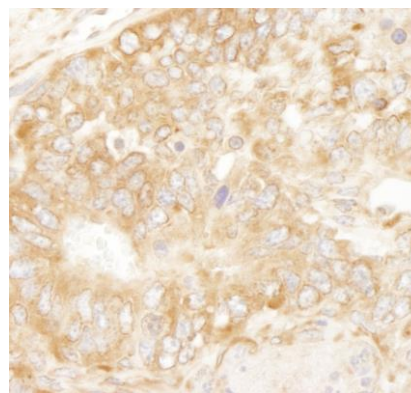
**ADDITIONAL INFO** <https://www.bethyl.com/product/IHC-00455>

Use the link above to view SDS, a current list of citations, and other product specific information.

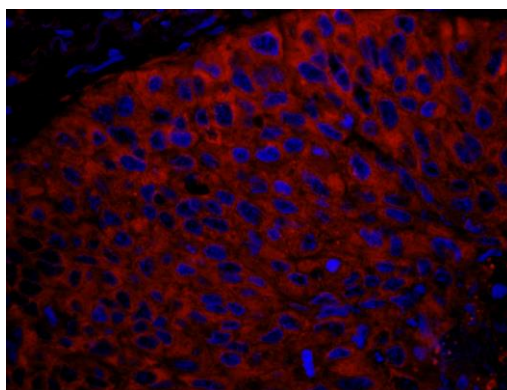
This document certifies that this product has met all of the quality control standards defined by Bethyl Laboratories, Inc.  
Eric McIntush, PhD | Chief Scientific Officer Date: June 21, 2019



**Detection of human RPL7 by immunohistochemistry.**  
*Sample:* FFPE section of human breast carcinoma.  
*Antibody:* Affinity purified rabbit anti-RPL7 (Cat. No. IHC-00455) used at a dilution of 1:100. *Detection:* DAB



**Detection of mouse RPL7 by immunohistochemistry.**  
*Sample:* FFPE section of mouse teratoma. *Antibody:* Affinity purified rabbit anti-RPL7 (Cat. No. IHC-00455) used at a dilution of 1:100. *Detection:* DAB



**Detection of human RPL7 by immunohistochemistry.**  
*Sample:* FFPE section of human non-small cell lung cancer.  
*Antibody:* Affinity purified rabbit anti-RPL7 (Cat. No. IHC-00455) used at a dilution of 1:100. *Detection:* Red-fluorescent goat anti-rabbit IgG highly cross-adsorbed Antibody used at a dilution of 1:100.