

E2F1 IHC Antibody

Rabbit Polyclonal

Antigen Affinity Purified

Protein ID NP_005216.1

Catalog No. IHC-00459

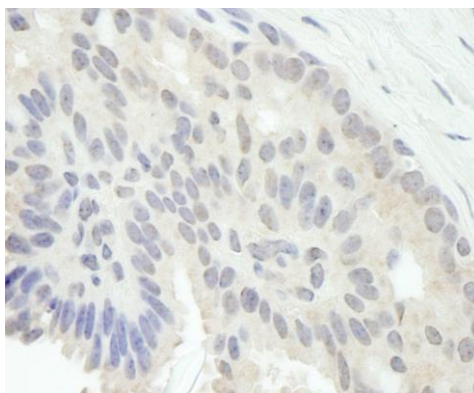
GeneID 1869

Lot No. IHC-00459-1



APPLICATIONS	IHC
SPECIES REACTIVITY	Human
AMOUNT	100 µl
CONCENTRATION	250 µg/ml
STORAGE/SHELF LIFE	2 – 8° C / 1 year from date of receipt
PHYSICAL STATE	Liquid
BUFFER	Tris-buffered Saline containing 0.1% BSA and 0.09% Sodium Azide
ISOTYPE	IgG
ORIGIN	USA
PRODUCTION PROCEDURES	<p>Antibody was affinity purified using an epitope specific to E2F1 immobilized on solid support.</p> <p>The epitope recognized by IHC-00459 maps to a region between residue 300 and 350 of human E2F Transcription Factor 1 using the numbering given in entry NP_005216.1 (GeneID 1869).</p> <p>Immunoglobulin concentration was determined by extinction coefficient: absorbance at 280 nm of 1.4 equals 1.0 mg of IgG.</p>
APPLICATIONS	<p>Centrifuge tube to remove product from lid. Optimal working dilutions should be determined experimentally by the investigator. Prepare working dilution immediately before use.</p> <p>Immunohistochemistry 1:100 – 1:500</p>
APPLICATION NOTES	<p>Epitope exposure is recommended.</p> <p>Epitope exposure with tris-EDTA pH9.0 buffer will enhance staining.</p> <p>Likely to work with frozen sections.</p> <p>In some cases, the antibody may be diluted further than indicated.</p>
IHC HUMAN CONTROLS	Breast Carcinoma, Prostate Carcinoma
ADDITIONAL INFO	<p>https://www.bethyl.com/product/IHC-00459</p> <p>Use the link above to view SDS, a current list of citations, and other product specific information.</p>

This document certifies that this product has met all of the quality control standards defined by Bethyl Laboratories, Inc.
Eric McIntush, PhD | Chief Scientific Officer Date: June 21, 2019



Detection of human E2F1 by immunohistochemistry.

Sample: FFPE section of human breast carcinoma.

Antibody: Affinity purified rabbit anti-E2F1 (Cat. No.

IHC-00459) used at a dilution of 1:250. *Detection:* DAB