

HIF1–alpha IHC Antibody

Rabbit Polyclonal

Antigen Affinity Purified RefSeq ID NP_001521.1

Catalog No. IHC-00460-T Uniprot ID Q16665

Lot No. IHC-00460-T-3 GeneID 3091

APPLICATIONS IHC, ICC-IF

SPECIES REACTIVITY Human

AMOUNT 10 µl

CONCENTRATION 200 µg/ml

STORAGE/SHELF LIFE 2 – 8°C / 1 year from date of receipt

PHYSICAL STATE Liquid

BUFFER Tris–buffered Saline containing 0.1% BSA and 0.09% Sodium Azide

ISOTYPE IgG

ORIGIN USA

PRODUCTION PROCEDURES Antibody was affinity purified using an epitope specific to HIF1–alpha immobilized on solid support.

The epitope recognized by IHC-00460-T maps to a region between residues 775 and the C-terminus (residue 826) of human hypoxia-inducible factor 1, alpha subunit using the numbering given in Swiss-Prot entry Q16665 (GeneID 3091).

Immunoglobulin concentration was determined by extinction coefficient: absorbance at 280 nm of 1.4 equals 1.0 mg of IgG.

APPLICATIONS Centrifuge tube to remove product from lid. Optimal working dilutions should be determined experimentally by the investigator. Prepare working dilution immediately before use.

Immunohistochemistry 1:100 to 1:500. Epitope retrieval with citrate buffer pH6.0 for 20 minutes using a pressure cooker is recommended for FFPE tissue sections.

Immunofluorescence 1:100 – 1:500 (ICC)

APPLICATION NOTES Epitope exposure is recommended.

Epitope exposure with tris-EDTA pH9.0 buffer will enhance staining.

Likely to work with frozen sections.

In some cases, the antibody may be diluted further than indicated.

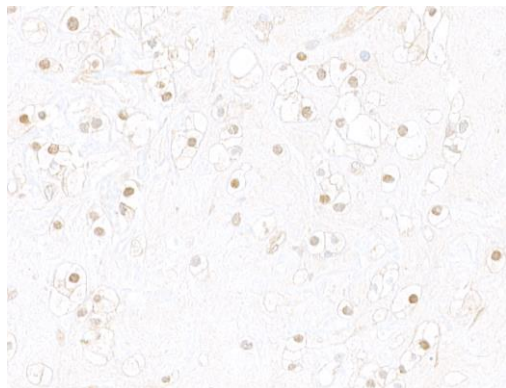
IHC HUMAN CONTROLS HeLa Cells

IHC MOUSE CONTROLS Squamous Cell Carcinoma

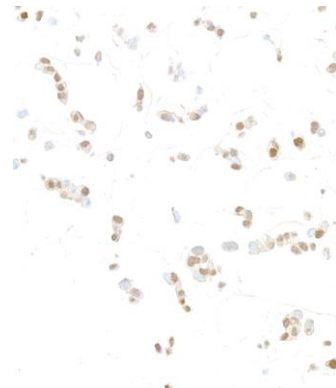
ADDITIONAL INFO <https://www.fortislife.com/p/IHC-00460-T>

Use the link above to view SDS, a current list of citations, and other product specific information.

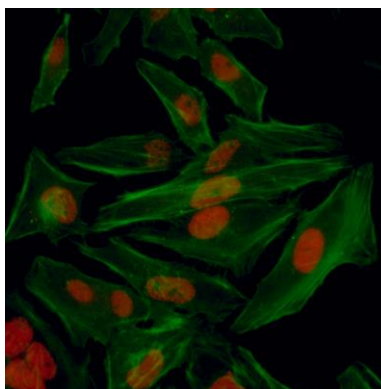
This document certifies that this product has met all of the quality control standards defined by Bethyl Laboratories, Inc.
Michael Spencer, PhD Date: December 12, 2022



Detection of human HIF1-alpha by immunohistochemistry. *Sample:* FFPE section of renal cell carcinoma. *Antibody:* Affinity purified rabbit anti-HIF1-alpha antibody (IHC-00460-T-3) used at a dilution of 1:100. *Detection:* DAB



Detection of human HIF1-alpha by immunohistochemistry. *Sample:* FFPE section of HepG2 cells treated with cobalt-chloride. *Antibody:* Affinity purified rabbit anti-HIF1-alpha antibody (IHC-00460-T-3) used at a dilution of 1:100. *Detection:* DAB



Detection of human HIF1-alpha by immunocytochemistry. *Sample:* Formaldehyde-fixed asynchronous hypoxic HeLa cells. *Antibody:* Affinity purified rabbit anti-HIF1-alpha (IHC-00460-T lot 2) used at a dilution of 1:100. *Detection:* Red fluorescence