

PPP3CA IHC Antibody

Rabbit Polyclonal

Antigen Affinity Purified Protein ID NP_000935.1

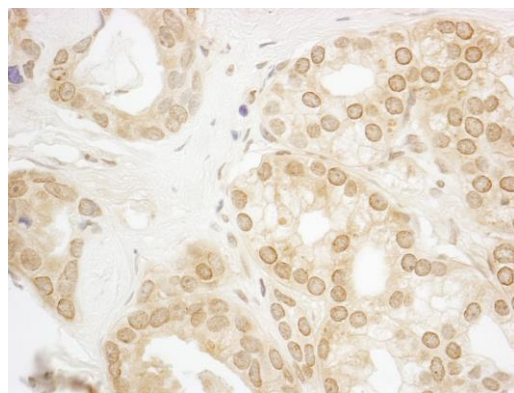
Catalog No. IHC-00486 GeneID 5530

Lot No. IHC-00486-1



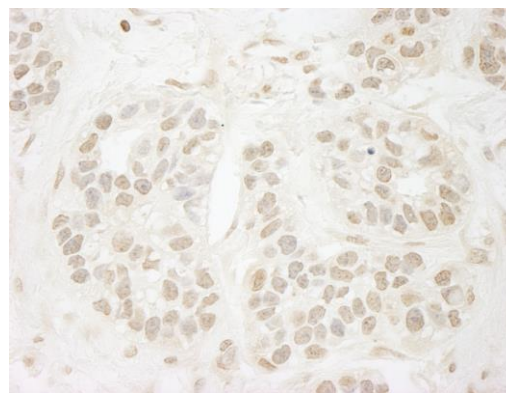
APPLICATIONS	IHC
SPECIES REACTIVITY	Human, Mouse
PRESUMED REACTIVITY	Based on 100% sequence identity, this antibody is predicted to react with Rat, X. tropicalis, Chicken, Turkey, Bovine, Dog, Horse, Pig, Panda, Orangutan, Monkey, Gorilla, Chimpanzee and Chinese hamster
AMOUNT	100 μ l
CONCENTRATION	250 μ g/ml
STORAGE/SHELF LIFE	2 – 8° C / 1 year from date of receipt
PHYSICAL STATE	Liquid
BUFFER	Tris-buffered Saline containing 0.1% BSA and 0.09% Sodium Azide
ISOTYPE	IgG
ORIGIN	USA
PRODUCTION PROCEDURES	<p>Antibody was affinity purified using an epitope specific to PPP3CA immobilized on solid support.</p> <p>The epitope recognized by IHC-00486 maps to a region between residue 470 and the C-terminus (residue 521) of human Protein Phosphatase 3, Catalytic Subunit, Alpha isoform using the numbering given in entry NP_000935.1 (GeneID 5530).</p> <p>Immunoglobulin concentration was determined by extinction coefficient: absorbance at 280 nm of 1.4 equals 1.0 mg of IgG.</p>
APPLICATIONS	<p>Centrifuge tube to remove product from lid. Optimal working dilutions should be determined experimentally by the investigator. Prepare working dilution immediately before use.</p> <p>Immunohistochemistry 1:100 – 1:500</p>
APPLICATION NOTES	<p>Epitope exposure is recommended.</p> <p>Epitope exposure with tris-EDTA pH9.0 buffer will enhance staining.</p> <p>Likely to work with frozen sections.</p> <p>In some cases, the antibody may be diluted further than indicated.</p>
IHC HUMAN CONTROLS	Breast Carcinoma, Colon Carcinoma, Non-Small Cell Lung Cancer, Ovarian Carcinoma, Prostate Carcinoma
IHC MOUSE CONTROLS	Colon Carcinoma CT26
ADDITIONAL INFO	<p>https://www.bethyl.com/product/IHC-00486</p> <p>Use the link above to view SDS, a current list of citations, and other product specific information.</p>

This document certifies that this product has met all of the quality control standards defined by Bethyl Laboratories, Inc.
Eric McIntush, PhD | Chief Scientific Officer Date: June 21, 2019

**Detection of human PPP3CA by immunohistochemistry.**

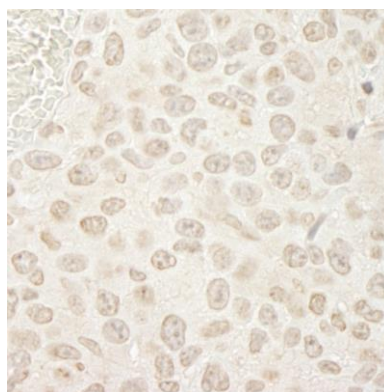
Sample: FFPE section of human prostate carcinoma.

Antibody: Affinity purified rabbit anti-PPP3CA (Cat. No. IHC-00486) used at a dilution of 1:250. *Detection:* DAB

**Detection of human PPP3CA by immunohistochemistry.**

Sample: FFPE section of human breast carcinoma.

Antibody: Affinity purified rabbit anti-PPP3CA (Cat. No. IHC-00486) used at a dilution of 1:250. *Detection:* DAB

**Detection of mouse PPP3CA by immunohistochemistry.**

Sample: FFPE section of mouse colon carcinoma. *Antibody:* Affinity purified rabbit anti-PPP3CA (Cat. No. IHC-00486) used at a dilution of 1:250. *Detection:* DAB