

USP33 IHC Antibody

Rabbit Polyclonal

Antigen Affinity Purified

Protein ID NP_055832.3

Catalog No. IHC-00508

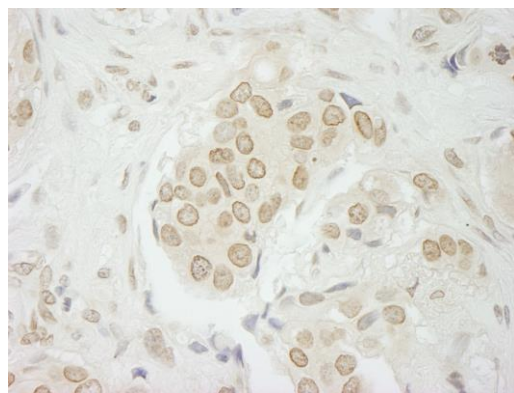
GeneID 23032

Lot No. IHC-00508-1

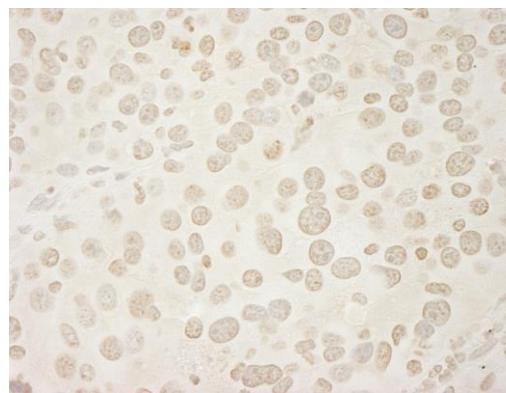


| | |
|------------------------------|---|
| APPLICATIONS | IHC |
| SPECIES REACTIVITY | Human, Mouse |
| PRESUMED REACTIVITY | Based on 100% sequence identity, this antibody is predicted to react with Rat, Bovine, Dog, Horse, Rabbit, Guinea pig_10141, Pig, Panda, Orangutan, Monkey, Gorilla and Chimpanzee |
| AMOUNT | 100 µl |
| CONCENTRATION | 250 µg/ml |
| STORAGE/SHELF LIFE | 2 – 8° C / 1 year from date of receipt |
| PHYSICAL STATE | Liquid |
| BUFFER | Tris-buffered Saline containing 0.1% BSA and 0.09% Sodium Azide |
| ISOTYPE | IgG |
| ORIGIN | USA |
| PRODUCTION PROCEDURES | <p>Antibody was affinity purified using an epitope specific to USP33 immobilized on solid support.</p> <p>The epitope recognized by IHC-00508 maps to a region between residue 900 and the C-terminus (residue 942) of human Ubiquitin Specific Peptidase 33 using the numbering given in entry NP_055832.3 (GeneID 23032).</p> <p>Immunoglobulin concentration was determined by extinction coefficient: absorbance at 280 nm of 1.4 equals 1.0 mg of IgG.</p> |
| APPLICATIONS | <p>Centrifuge tube to remove product from lid. Optimal working dilutions should be determined experimentally by the investigator. Prepare working dilution immediately before use.</p> <p>Immunohistochemistry 1:100 – 1:500</p> |
| APPLICATION NOTES | <p>Epitope exposure is recommended.</p> <p>Epitope exposure with tris-EDTA pH9.0 buffer will enhance staining.</p> <p>Likely to work with frozen sections.</p> <p>In some cases, the antibody may be diluted further than indicated.</p> |
| IHC HUMAN CONTROLS | Breast Carcinoma, Colon Carcinoma, Linitis Plastica Stomach Cancer, Non-Small Cell Lung Cancer, Ovarian Carcinoma, Prostate Carcinoma, Stomach Adenocarcinoma, Testicular Seminoma |
| IHC MOUSE CONTROLS | Renal Cell Carcinoma |
| ADDITIONAL INFO | <p>https://www.bethyl.com/product/IHC-00508</p> <p>Use the link above to view SDS, a current list of citations, and other product specific information.</p> |

This document certifies that this product has met all of the quality control standards defined by Bethyl Laboratories, Inc.
Eric McIntush, PhD | Chief Scientific Officer Date: June 21, 2019



Detection of human USP33 by immunohistochemistry.
Sample: FFPE section of human breast carcinoma.
Antibody: Affinity purified rabbit anti-USP33 (Cat. No. IHC-00508) used at a dilution of 1:250. *Detection:* DAB



Detection of mouse USP33 by immunohistochemistry.
Sample: FFPE section of mouse renal cell carcinoma.
Antibody: Affinity purified rabbit anti-USP33 (Cat. No. IHC-00508) used at a dilution of 1:250. *Detection:* DAB