

# DDX19 IHC Antibody

Rabbit Polyclonal

Antigen Affinity Purified

Protein ID NP\_009173.1

Catalog No. IHC-00514

GeneID 11269

Lot No. IHC-00514-1



<b>APPLICATIONS</b>	IHC
<b>SPECIES REACTIVITY</b>	Human, Mouse
<b>PRESUMED REACTIVITY</b>	Based on 100% sequence identity, this antibody is predicted to react with Rat, Zebrafish, <i>X. laevis</i> , <i>X. tropicalis</i> , Bovine, Guinea pig_10141, Orangutan, Root node of taxonomy and Chinese hamster
<b>AMOUNT</b>	100 µl
<b>CONCENTRATION</b>	200 µg/ml
<b>STORAGE/SHELF LIFE</b>	2 - 8° C / 1 year from date of receipt
<b>PHYSICAL STATE</b>	Liquid
<b>BUFFER</b>	Tris-buffered Saline containing 0.1% BSA and 0.09% Sodium Azide
<b>ISOTYPE</b>	IgG
<b>ORIGIN</b>	USA
<b>PRODUCTION PROCEDURES</b>	Antibody was affinity purified using an epitope specific to DDX19 immobilized on solid support.

The epitope recognized by IHC-00514 maps to a region between residue 450 and the C-terminus (residue 479) of human DEAD (Asp-Glu-Ala-Asp) box polypeptide 19B using the numbering given in entry NP\_009173.1 (GeneID 11269). The epitope is highly conserved with DDX19A (GeneID 55308), but crossreactivity of the antibody with this homolog has not been assessed.

Immunoglobulin concentration was determined by extinction coefficient: absorbance at 280 nm of 1.4 equals 1.0 mg of IgG.

**APPLICATIONS** Centrifuge tube to remove product from lid. Optimal working dilutions should be determined experimentally by the investigator. Prepare working dilution immediately before use.

Immunohistochemistry 1:100 - 1:500

**APPLICATION NOTES** Epitope exposure is recommended.

Epitope exposure with tris-EDTA pH9.0 buffer will enhance staining.

Likely to work with frozen sections.

In some cases, the antibody may be diluted further than indicated.

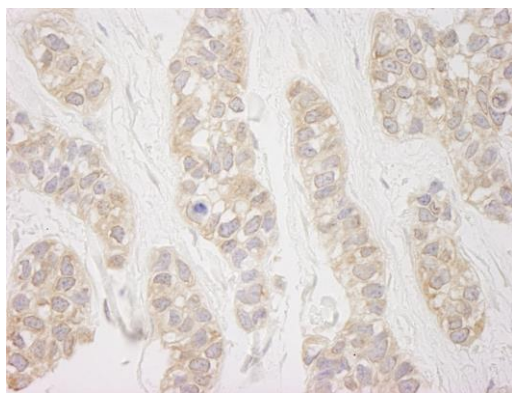
**IHC HUMAN CONTROLS** Breast Carcinoma, Non-Small Cell Lung Cancer

**IHC MOUSE CONTROLS** Teratoma

**ADDITIONAL INFO** <https://www.bethyl.com/product/IHC-00514>

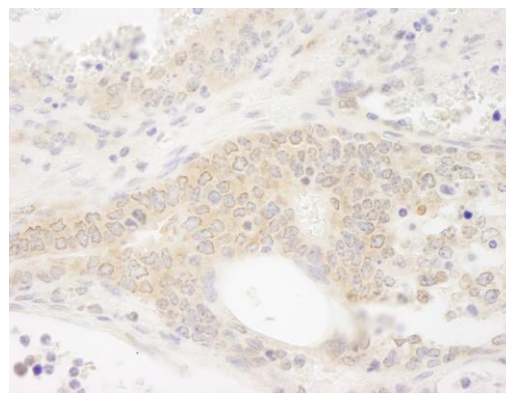
Use the link above to view SDS, a current list of citations, and other product specific information.

This document certifies that this product has met all of the quality control standards defined by Bethyl Laboratories, Inc.  
Eric McIntush, PhD | Chief Scientific Officer Date: June 21, 2019

**Detection of human DDX19 by immunohistochemistry.**

*Sample:* FFPE section of human breast carcinoma.

*Antibody:* Affinity purified rabbit anti-DDX19 (Cat. No. IHC-00514) used at a dilution of 1:250. *Detection:* DAB

**Detection of mouse DDX19 by immunohistochemistry.**

*Sample:* FFPE section of mouse teratoma. *Antibody:* Affinity purified rabbit anti-DDX19 (Cat. No. IHC-00514) used at a dilution of 1:250. *Detection:* DAB