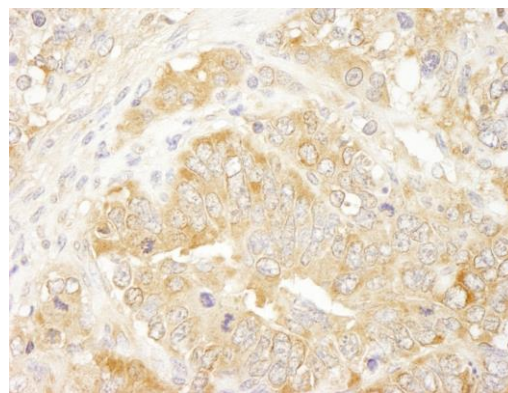


**Detection of human eIF3J/EIF3S1 by immunohistochemistry.** *Sample:* FFPE section of human colon carcinoma. *Antibody:* Affinity purified rabbit anti-eIF3J/EIF3S1 (Cat. No. IHC-00617) used at a dilution of 1:500 *Detection:* DAB



**Detection of mouse eIF3J/EIF3S1 by immunohistochemistry.** *Sample:* FFPE section of mouse teratoma. *Antibody:* Affinity purified rabbit anti-eIF3J/EIF3S1 (Cat. No. IHC-00617) used at a dilution of 1:100 *Detection:* DAB