

# BCCIP IHC Antibody

Rabbit Polyclonal

Antigen Affinity Purified

Protein ID NP\_510868.1

Catalog No. IHC-00636

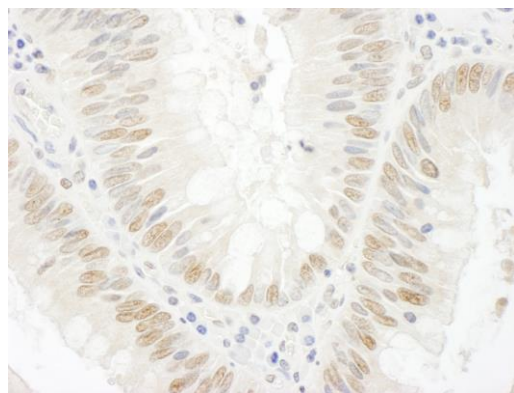
GeneID 56647

Lot No. IHC-00636-1

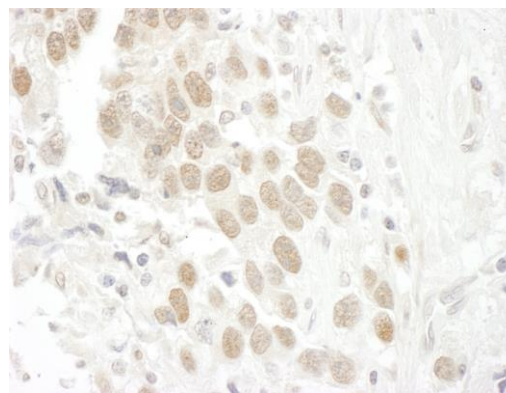


|                              |   |
|------------------------------|---|
| <b>APPLICATIONS</b>          | IHC, IHC-IF   |
| <b>SPECIES REACTIVITY</b>    | Human   |
| <b>PRESUMED REACTIVITY</b>   | Based on 100% sequence identity, this antibody is predicted to react with Gorilla, Green anole and White-tufted-ear marmoset  |
| <b>AMOUNT</b>                | 100 µl  |
| <b>CONCENTRATION</b>         | 250 µg/ml   |
| <b>STORAGE/SHELF LIFE</b>    | 2 - 8° C / 1 year from date of receipt  |
| <b>PHYSICAL STATE</b>        | Liquid  |
| <b>BUFFER</b>                | Tris-buffered Saline containing 0.1% BSA and 0.09% Sodium Azide   |
| <b>ISOTYPE</b>               | IgG   |
| <b>ORIGIN</b>                | USA   |
| <b>PRODUCTION PROCEDURES</b> | <p>Antibody was affinity purified using an epitope specific to BCCIP immobilized on solid support.</p> <p>The epitope recognized by IHC-00636 maps to a region between residue 300 and 350 of human BRCA2 and CDKN1A interacting protein using the numbering given in entry NP_510868.1 (GeneID 56647).</p> <p>Immunoglobulin concentration was determined by extinction coefficient: absorbance at 280 nm of 1.4 equals 1.0 mg of IgG.</p> |
| <b>APPLICATIONS</b>          | <p>Centrifuge tube to remove product from lid. Optimal working dilutions should be determined experimentally by the investigator. Prepare working dilution immediately before use.</p> <p>Immunohistochemistry 1:100 - 1:500</p> <p>Immunofluorescence 1:50 - 1:500 (IHC)</p>   |
| <b>APPLICATION NOTES</b>     | <p>Epitope exposure is recommended.</p> <p>Epitope exposure with citrate buffer will enhance staining.</p> <p>Likely to work with frozen sections.</p> <p>In some cases, the antibody may be diluted further than indicated.</p>  |
| <b>IHC HUMAN CONTROLS</b>    | Breast Carcinoma, Colon Carcinoma, Ovarian Carcinoma, Testicular Seminoma   |
| <b>ADDITIONAL INFO</b>       | <p><a href="https://www.bethyl.com/product/IHC-00636">https://www.bethyl.com/product/IHC-00636</a></p> <p>Use the link above to view SDS, a current list of citations, and other product specific information.</p>  |

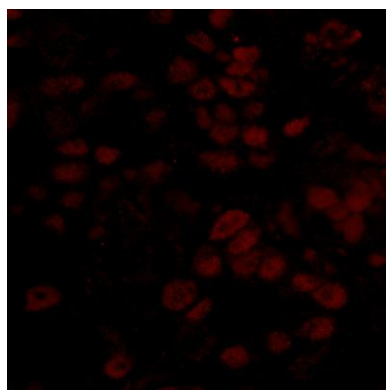
This document certifies that this product has met all of the quality control standards defined by Bethyl Laboratories, Inc.  
Eric McIntush, PhD | Chief Scientific Officer Date: June 21, 2019



**Detection of human BCCIP by immunohistochemistry.**  
*Sample:* FFPE section of human colon carcinoma. *Antibody:* Affinity purified rabbit anti-BCCIP (Cat. No. IHC-00636) used at a dilution of 1:250. *Detection:* DAB



**Detection of human BCCIP by immunohistochemistry.**  
*Sample:* FFPE section of human testicular seminoma. *Antibody:* Affinity purified rabbit anti-BCCIP (Cat. No. IHC-00636) used at a dilution of 1:250. *Detection:* DAB



**Detection of human BCCIP by immunohistochemistry.**  
*Sample:* FFPE section of human breast carcinoma. *Antibody:* Affinity purified rabbit anti-BCCIP (Cat. No. IHC-00636) used at a dilution of 1:100. *Detection:* Red-fluorescent goat anti-rabbit IgG highly cross-adsorbed Antibody used at a dilution of 1:100.