

CKAP4 IHC Antibody

Rabbit Polyclonal

Antigen Affinity Purified

Protein ID NP_006816.2

Catalog No. IHC-00655-T

GeneID 10970

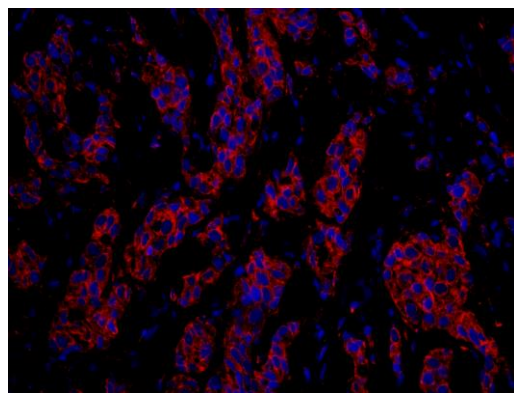
Lot No. IHC-00655-T-1



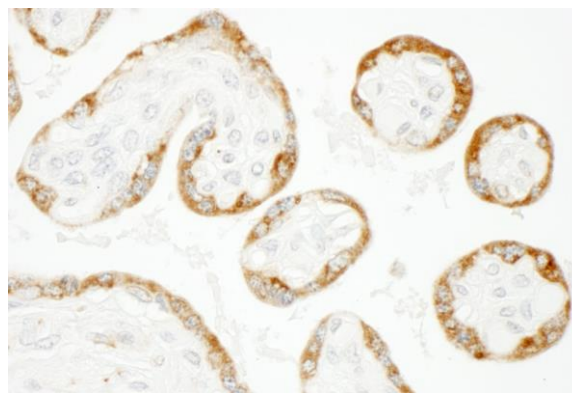
APPLICATIONS	IHC, IHC-IF
SPECIES REACTIVITY	Human, Mouse
AMOUNT	10 µl
CONCENTRATION	100 µg/ml
STORAGE/SHELF LIFE	2 – 8° C / 1 year from date of receipt
PHYSICAL STATE	Liquid
BUFFER	Tris-buffered Saline containing 0.1% BSA and 0.09% Sodium Azide
ISOTYPE	IgG
ORIGIN	USA
PRODUCTION PROCEDURES	<p>Antibody was affinity purified using an epitope specific to CKAP4 immobilized on solid support.</p> <p>The epitope recognized by IHC-00655-T maps to a region between residue 500 and 550 of human cytoskeleton-associated protein 4 using the numbering given in entry NP_006816.2 (GeneID 10970).</p> <p>Immunoglobulin concentration was determined by extinction coefficient: absorbance at 280 nm of 1.4 equals 1.0 mg of IgG.</p>
APPLICATIONS	<p>Centrifuge tube to remove product from lid. Optimal working dilutions should be determined experimentally by the investigator. Prepare working dilution immediately before use.</p> <p>Immunohistochemistry 1:100 – 1:500</p> <p>Immunofluorescence 1:50 – 1:500 (IHC)</p>
APPLICATION NOTES	<p>Epitope exposure is recommended.</p> <p>Epitope exposure with citrate buffer will enhance staining.</p> <p>Likely to work with frozen sections.</p> <p>In some cases, the antibody may be diluted further than indicated.</p>
IHC HUMAN CONTROLS	Breast Carcinoma, Colon Carcinoma, Non-Small Cell Lung Cancer, Osteosarcoma, Placenta
IHC MOUSE CONTROLS	Hybridoma Tumor
ADDITIONAL INFO	<p>https://www.bethyl.com/product/IHC-00655-T</p> <p>Use the link above to view SDS, a current list of citations, and other product specific information.</p>

This document certifies that this product has met all of the quality control standards defined by Bethyl Laboratories, Inc.
Eric McIntush, PhD | Chief Scientific Officer

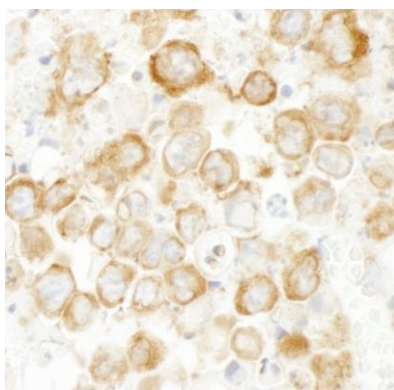
Date: June 21, 2019



Detection of human CKAP4 by immunohistochemistry.
Sample: FFPE section of human breast carcinoma.
Antibody: Affinity purified rabbit anti-CKAP4 (Cat. No. IHC-00655-T) used at a dilution of 1:100. *Detection:* Red-fluorescent goat anti-rabbit IgG-heavy and light chain cross-adsorbed Antibody DyLight 594 Conjugated used at a dilution of 1:100.



Detection of human CKAP4 by immunohistochemistry.
Sample: FFPE section of human placenta. *Antibody:* Affinity purified rabbit anti-CKAP4 (Cat. No. IHC-00655-T) used at a dilution of 1:500. *Detection:* DAB



Detection of mouse CKAP4 by immunohistochemistry.
Sample: FFPE section of mouse hybridoma tumor.
Antibody: Affinity purified rabbit anti-CKAP4 (Cat. No. IHC-00655-T) used at a dilution of 1:500. *Detection:* DAB