

NOPP140 IHC Antibody

Rabbit Polyclonal

Antigen Affinity Purified

Protein ID NP_004732.2

Catalog No. IHC-00658-T

GeneID 9221

Lot No. IHC-00658-T-1



APPLICATIONS IHC

SPECIES REACTIVITY Human

AMOUNT 10 µl

CONCENTRATION 250 µg/ml

STORAGE/SHELF LIFE 2 – 8° C / 1 year from date of receipt

PHYSICAL STATE Liquid

BUFFER Tris-buffered Saline containing 0.1% BSA and 0.09% Sodium Azide

ISOTYPE IgG

ORIGIN USA

PRODUCTION PROCEDURES Antibody was affinity purified using an epitope specific to NOPP140 immobilized on solid support.

The epitope recognized by IHC-00658-T maps to a region between residue 1 and 50 of human nucleolar and coiled-body phosphoprotein 1 using the numbering given in entry NP_004732.2 (GeneID 9221).

Immunoglobulin concentration was determined by extinction coefficient: absorbance at 280 nm of 1.4 equals 1.0 mg of IgG.

APPLICATIONS Centrifuge tube to remove product from lid. Optimal working dilutions should be determined experimentally by the investigator. Prepare working dilution immediately before use.

Immunohistochemistry 1:100 – 1:500

APPLICATION NOTES Epitope exposure is recommended.

Epitope exposure with citrate buffer will enhance staining.

Likely to work with frozen sections.

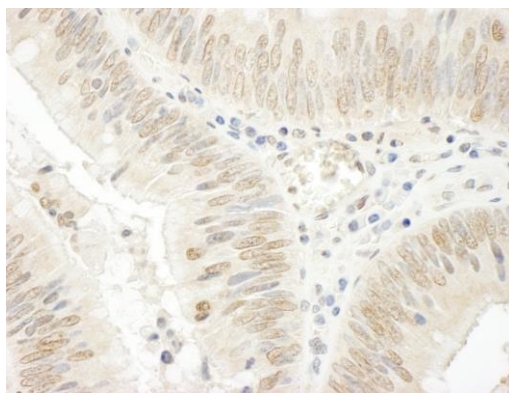
In some cases, the antibody may be diluted further than indicated.

IHC HUMAN CONTROLS Colon Carcinoma

ADDITIONAL INFO <https://www.bethyl.com/product/IHC-00658-T>

Use the link above to view SDS, a current list of citations, and other product specific information.

This document certifies that this product has met all of the quality control standards defined by Bethyl Laboratories, Inc.
Eric McIntush, PhD | Chief Scientific Officer Date: June 21, 2019



Detection of human NOPP140 by immunohistochemistry.
Sample: FFPE section of human colon carcinoma. *Antibody:* Affinity purified rabbit anti-NOPP140 (Cat. No. IHC-00658-T) used at a dilution of 1:250. *Detection:* DAB