

eIF3B/EIF3S9 IHC Antibody

Rabbit Polyclonal

Antigen Affinity Purified

Protein ID NP_003742.2

Catalog No. IHC-00659

GeneID 8662

Lot No. IHC-00659-1



APPLICATIONS	IHC, IHC-IF
SPECIES REACTIVITY	Human, Mouse
AMOUNT	100 µl
CONCENTRATION	100 µg/ml
STORAGE/SHELF LIFE	2 - 8° C / 1 year from date of receipt
PHYSICAL STATE	Liquid
BUFFER	Tris-buffered Saline containing 0.1% BSA and 0.09% Sodium Azide
ISOTYPE	IgG
ORIGIN	USA
PRODUCTION PROCEDURES	Antibody was affinity purified using an epitope specific to eIF3B/EIF3S9 immobilized on solid support.

The epitope recognized by IHC-00659 maps to a region between residue 100 and 150 of human eukaryotic translation initiation factor 3, subunit B (eukaryotic translation initiation factor 3, subunit 9) using the numbering given in entry NP_003742.2 (GeneID 8662).

Immunoglobulin concentration was determined by extinction coefficient: absorbance at 280 nm of 1.4 equals 1.0 mg of IgG.

APPLICATIONS Centrifuge tube to remove product from lid. Optimal working dilutions should be determined experimentally by the investigator. Prepare working dilution immediately before use.

Immunohistochemistry 1:100 - 1:500

Immunofluorescence 1:50 - 1:500
(IHC)

APPLICATION NOTES Epitope exposure is recommended.

Epitope exposure with citrate buffer will enhance staining.

Likely to work with frozen sections.

In some cases, the antibody may be diluted further than indicated.

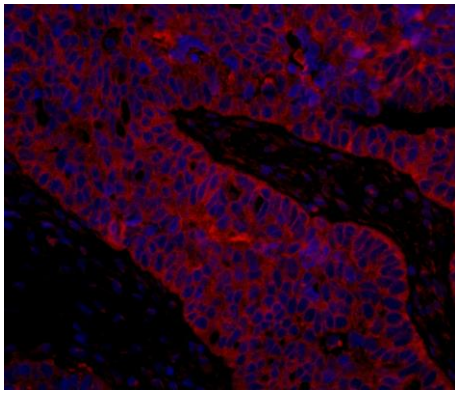
IHC HUMAN CONTROLS Breast Carcinoma, Colon Carcinoma, Non-Small Cell Lung Cancer, Ovarian Carcinoma, Prostate Carcinoma, Stomach Adenocarcinoma, Testicular Seminoma

IHC MOUSE CONTROLS Colon Carcinoma CT26, Renal Cell Carcinoma, Teratoma

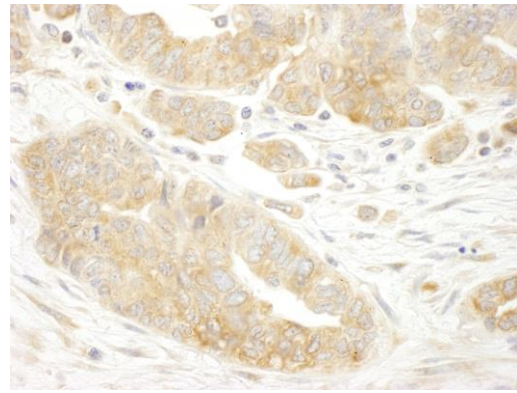
ADDITIONAL INFO <https://www.bethyl.com/product/IHC-00659>

Use the link above to view SDS, a current list of citations, and other product specific information.

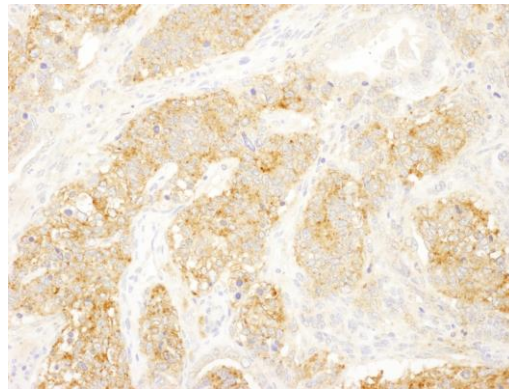
This document certifies that this product has met all of the quality control standards defined by Bethyl Laboratories, Inc.
Eric McIntush, PhD | Chief Scientific Officer Date: June 21, 2019



Detection of human eIF3B/EIF3S9 by immunohistochemistry. *Sample:* FFPE section of human ovarian carcinoma. *Antibody:* Affinity purified rabbit anti-eIF3B/EIF3S9 (Cat. No. IHC-00659) used at a dilution of 1:100. *Detection:* Red-fluorescent goat anti-rabbit IgG-heavy and light chain cross-adsorbed Antibody DyLight® 594 Conjugated used at a dilution of 1:100.



Detection of human eIF3B/EIF3S9 by immunohistochemistry. *Sample:* FFPE section of human ovarian carcinoma. *Antibody:* Affinity purified rabbit anti-eIF3B/EIF3S9 (Cat. No. IHC-00659) used at a dilution of 1:500. *Detection:* DAB



Detection of mouse eIF3B/EIF3S9 by immunohistochemistry. *Sample:* FFPE section of mouse teratoma. *Antibody:* Affinity purified rabbit anti-eIF3B/EIF3S9 (Cat. No. IHC-00659) used at a dilution of 1:100. *Detection:* DAB