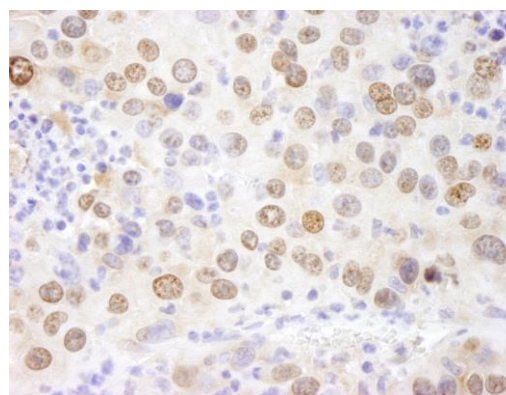
**Detection of human HMGN1 by immunohistochemistry.**

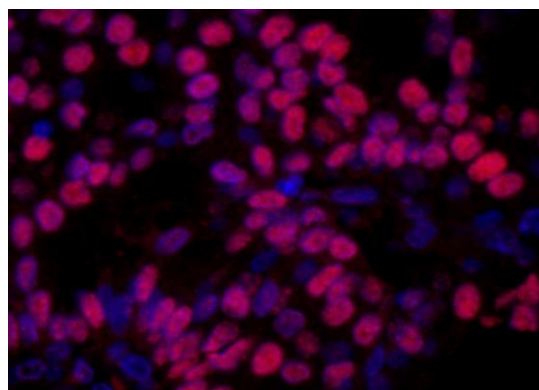
Sample: FFPE section of human breast carcinoma.

Antibody: Affinity purified rabbit anti-HMGN1 (Cat. No. IHC-00670) used at a dilution of 1:250. *Detection:* DAB

**Detection of mouse HMGN1 by immunohistochemistry.**

Sample: FFPE section of mouse renal cell carcinoma.

Antibody: Affinity purified rabbit anti-HMGN1 (Cat. No. IHC-00670) used at a dilution of 1:250. *Detection:* DAB

**Detection of human HMGN1 by immunohistochemistry.**

Sample: FFPE section of human breast carcinoma.

Antibody: Affinity purified rabbit anti-HMGN1 (Cat. No. IHC-00670) used at a dilution of 1:100. *Detection:* Red-fluorescent goat anti-rabbit IgG highly cross-adsorbed Antibody used at a dilution of 1:100.