

Cul2 IHC Antibody

Rabbit Polyclonal

Antigen Affinity Purified

Protein ID NP_003582.2

Catalog No. IHC-00692

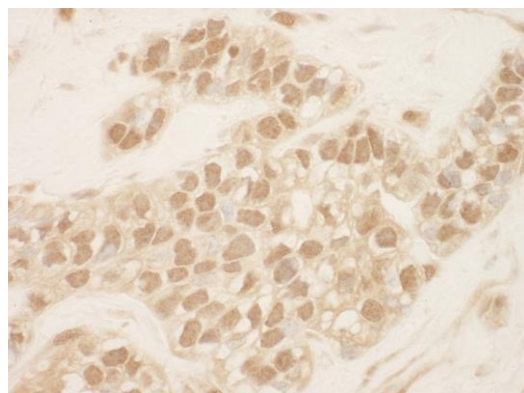
GeneID 8453

Lot No. IHC-00692-1

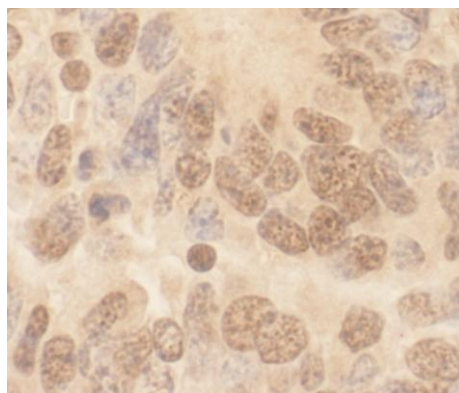


| | |
|------------------------------|---|
| APPLICATIONS | IHC |
| SPECIES REACTIVITY | Human, Mouse |
| PRESUMED REACTIVITY | Based on 100% sequence identity, this antibody is predicted to react with Rat, Bovine, Dog, Horse, Guinea pig_10141, Panda, Orangutan, Monkey, Gorilla, Chimpanzee, Naked mole rat and Small-eared galago |
| AMOUNT | 100 µl |
| CONCENTRATION | 100 µg/ml |
| STORAGE/SHELF LIFE | 2 - 8° C / 1 year from date of receipt |
| PHYSICAL STATE | Liquid |
| BUFFER | Tris-buffered Saline containing 0.1% BSA and 0.09% Sodium Azide |
| ISOTYPE | IgG |
| ORIGIN | USA |
| PRODUCTION PROCEDURES | <p>Antibody was affinity purified using an epitope specific to Cul2 immobilized on solid support.</p> <p>The epitope recognized by IHC-00692 maps to a region between residue 150 and 200 of human cullin 2 using the numbering given in entry NP_003582.2 (GeneID 8453).</p> <p>Antibody concentration was determined by extinction coefficient: absorbance at 280 nm of 1.4 equals 1.0 mg of IgG.</p> |
| APPLICATIONS | <p>Centrifuge tube to remove product from lid. Optimal working dilutions should be determined experimentally by the investigator. Prepare working dilution immediately before use.</p> <p>Immunohistochemistry 1:100 - 1:500</p> |
| APPLICATION NOTES | <p>Epitope exposure is recommended.</p> <p>Epitope exposure with citrate buffer will enhance staining.</p> <p>Likely to work with frozen sections.</p> |
| IHC HUMAN CONTROLS | <p>In some cases, the antibody may be diluted further than indicated.</p> <p>Breast Carcinoma, Colon Carcinoma, Ovarian Carcinoma, Prostate Carcinoma, Testicular Seminoma</p> |
| IHC MOUSE CONTROLS | Teratoma |
| ADDITIONAL INFO | <p>https://www.bethyl.com/product/IHC-00692</p> <p>Use the link above to view SDS, a current list of citations, and other product specific information.</p> |

This document certifies that this product has met all of the quality control standards defined by Bethyl Laboratories, Inc.
Eric McIntush, PhD | Chief Scientific Officer Date: June 21, 2019



Detection of human Cul2 by immunohistochemistry.
Sample: FFPE section of human breast carcinoma.
Antibody: Affinity purified rabbit anti-Cul2 (Cat. No. IHC-00692) used at a dilution of 1:100
Detection: DAB



Detection of mouse Cul2 by immunohistochemistry.
Sample: FFPE section of mouse teratoma. *Antibody:* Affinity purified rabbit anti-Cul2 (Cat. No. IHC-00692) used at a dilution of 1:100
Detection: DAB