

# Cul2 IHC Antibody

Rabbit Polyclonal

Antigen Affinity Purified

Protein ID NP\_003582.2

Catalog No. IHC-00692-T

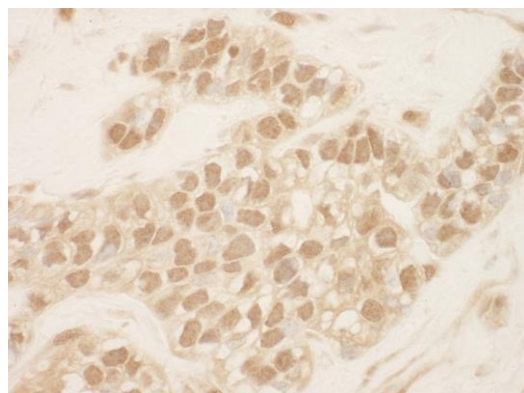
GeneID 8453

Lot No. IHC-00692-T-1

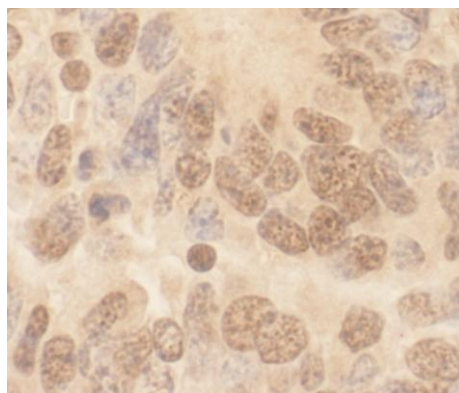


<b>APPLICATIONS</b>	IHC
<b>SPECIES REACTIVITY</b>	Human, Mouse
<b>AMOUNT</b>	10 µl
<b>CONCENTRATION</b>	100 µg/ml
<b>STORAGE/SHELF LIFE</b>	2 – 8° C / 1 year from date of receipt
<b>PHYSICAL STATE</b>	Liquid
<b>BUFFER</b>	Tris-buffered Saline containing 0.1% BSA and 0.09% Sodium Azide
<b>ISOTYPE</b>	IgG
<b>ORIGIN</b>	USA
<b>PRODUCTION PROCEDURES</b>	<p>Antibody was affinity purified using an epitope specific to Cul2 immobilized on solid support.</p> <p>The epitope recognized by IHC-00692-T maps to a region between residue 150 and 200 of human cullin 2 using the numbering given in entry NP_003582.2 (GeneID 8453).</p> <p>Antibody concentration was determined by extinction coefficient: absorbance at 280 nm of 1.4 equals 1.0 mg of IgG.</p>
<b>APPLICATIONS</b>	<p>Centrifuge tube to remove product from lid. Optimal working dilutions should be determined experimentally by the investigator. Prepare working dilution immediately before use.</p> <p>Immunohistochemistry 1:100 – 1:500</p>
<b>APPLICATION NOTES</b>	<p>Epitope exposure is recommended.</p> <p>Epitope exposure with citrate buffer will enhance staining.</p> <p>Likely to work with frozen sections.</p>
<b>IHC HUMAN CONTROLS</b>	<p>In some cases, the antibody may be diluted further than indicated.</p> <p>Breast Carcinoma, Colon Carcinoma, Ovarian Carcinoma, Prostate Carcinoma, Testicular Seminoma</p>
<b>IHC MOUSE CONTROLS</b>	Teratoma
<b>ADDITIONAL INFO</b>	<p><a href="https://www.bethyl.com/product/IHC-00692-T">https://www.bethyl.com/product/IHC-00692-T</a></p> <p>Use the link above to view SDS, a current list of citations, and other product specific information.</p>

This document certifies that this product has met all of the quality control standards defined by Bethyl Laboratories, Inc.  
Eric McIntush, PhD | Chief Scientific Officer Date: June 21, 2019



**Detection of human Cul2 by immunohistochemistry.**  
*Sample:* FFPE section of human breast carcinoma.  
*Antibody:* Affinity purified rabbit anti-Cul2 (Cat. No. IHC-00692-T) used at a dilution of 1:100  
*Detection:* DAB



**Detection of mouse Cul2 by immunohistochemistry.**  
*Sample:* FFPE section of mouse teratoma. *Antibody:* Affinity purified rabbit anti-Cul2 (Cat. No. IHC-00692-T) used at a dilution of 1:100  
*Detection:* DAB