

# ARID3B IHC Antibody

Rabbit Polyclonal

Antigen Affinity Purified

Protein ID EAW99328.1

Catalog No. IHC-00717

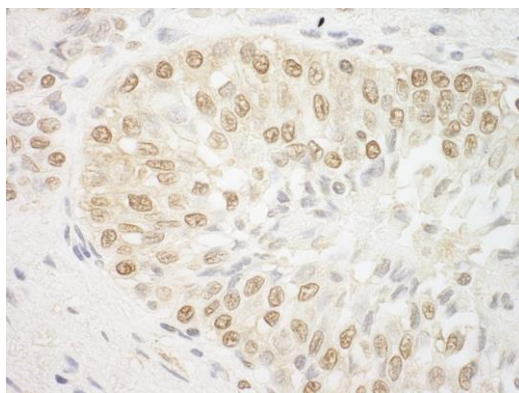
GeneID 10620

Lot No. IHC-00717-1



|                              |                                                                                                                                                                                                                                                                                                                                                                                                                                |
|------------------------------|--------------------------------------------------------------------------------------------------------------------------------------------------------------------------------------------------------------------------------------------------------------------------------------------------------------------------------------------------------------------------------------------------------------------------------|
| <b>APPLICATIONS</b>          | IHC                                                                                                                                                                                                                                                                                                                                                                                                                            |
| <b>SPECIES REACTIVITY</b>    | Human                                                                                                                                                                                                                                                                                                                                                                                                                          |
| <b>PRESUMED REACTIVITY</b>   | Based on 100% sequence identity, this antibody is predicted to react with Orangutan, Monkey and Crab-eating macaque                                                                                                                                                                                                                                                                                                            |
| <b>AMOUNT</b>                | 100 µl                                                                                                                                                                                                                                                                                                                                                                                                                         |
| <b>CONCENTRATION</b>         | 250 µg/ml                                                                                                                                                                                                                                                                                                                                                                                                                      |
| <b>STORAGE/SHELF LIFE</b>    | 2 – 8° C / 1 year from date of receipt                                                                                                                                                                                                                                                                                                                                                                                         |
| <b>PHYSICAL STATE</b>        | Liquid                                                                                                                                                                                                                                                                                                                                                                                                                         |
| <b>BUFFER</b>                | Tris-buffered Saline containing 0.1% BSA and 0.09% Sodium Azide                                                                                                                                                                                                                                                                                                                                                                |
| <b>ISOTYPE</b>               | IgG                                                                                                                                                                                                                                                                                                                                                                                                                            |
| <b>ORIGIN</b>                | USA                                                                                                                                                                                                                                                                                                                                                                                                                            |
| <b>PRODUCTION PROCEDURES</b> | <p>Antibody was affinity purified using an epitope specific to ARID3B immobilized on solid support.</p> <p>The epitope recognized by IHC-00717 maps to a region between residue 100 and 150 of human AT rich interactive domain 3B using the numbering given in entry EAW99328.1 (GeneID 10620).</p> <p>Antibody concentration was determined by extinction coefficient: absorbance at 280 nm of 1.4 equals 1.0 mg of IgG.</p> |
| <b>APPLICATIONS</b>          | <p>Centrifuge tube to remove product from lid. Optimal working dilutions should be determined experimentally by the investigator. Prepare working dilution immediately before use.</p> <p>Immunohistochemistry 1:100 – 1:500</p>                                                                                                                                                                                               |
| <b>APPLICATION NOTES</b>     | <p>Epitope exposure is recommended.</p> <p>Epitope exposure with citrate buffer will enhance staining.</p> <p>Likely to work with frozen sections.</p> <p>In some cases, the antibody may be diluted further than indicated.</p>                                                                                                                                                                                               |
| <b>IHC HUMAN CONTROLS</b>    | Breast Carcinoma, Ovarian Carcinoma, Prostate Carcinoma                                                                                                                                                                                                                                                                                                                                                                        |
| <b>ADDITIONAL INFO</b>       | <p><a href="https://www.bethyl.com/product/IHC-00717">https://www.bethyl.com/product/IHC-00717</a></p> <p>Use the link above to view SDS, a current list of citations, and other product specific information.</p>                                                                                                                                                                                                             |

This document certifies that this product has met all of the quality control standards defined by Bethyl Laboratories, Inc.  
Eric McIntush, PhD | Chief Scientific Officer Date: June 21, 2019



**Detection of human ARID3B by immunohistochemistry.**

*Sample:* FFPE section of human prostate carcinoma.

*Antibody:* Affinity purified rabbit anti-ARID3B (Cat. No. IHC-00717) used at a dilution of 1:250

*Detection:* DAB