

# CDC6 IHC Antibody

Rabbit Polyclonal

Antigen Affinity Purified Protein ID NP\_001245.1

Catalog No. IHC-00722-T GeneID 990

Lot No. IHC-00722-T-1



**APPLICATIONS** IHC

**SPECIES REACTIVITY** Human, Mouse

**AMOUNT** 10 µl

**CONCENTRATION** 100 µg/ml

**STORAGE/SHELF LIFE** 2 – 8° C / 1 year from date of receipt

**PHYSICAL STATE** Liquid

**BUFFER** Tris-buffered Saline containing 0.1% BSA and 0.09% Sodium Azide

**ISOTYPE** IgG

**ORIGIN** USA

**PRODUCTION PROCEDURES** Antibody was affinity purified using an epitope specific to CDC6 immobilized on solid support.

The epitope recognized by IHC-00722-T maps to a region between residue 1 and 50 of human cell division cycle 6 using the numbering given in entry NP\_001245.1 (GeneID 990).

Antibody concentration was determined by extinction coefficient: absorbance at 280 nm of 1.4 equals 1.0 mg of IgG.

**APPLICATIONS** Centrifuge tube to remove product from lid. Optimal working dilutions should be determined experimentally by the investigator. Prepare working dilution immediately before use.

Immunohistochemistry 1:100 – 1:500

**APPLICATION NOTES** Epitope exposure is recommended.

Epitope exposure with citrate buffer will enhance staining.

Likely to work with frozen sections.

In some cases, the antibody may be diluted further than indicated.

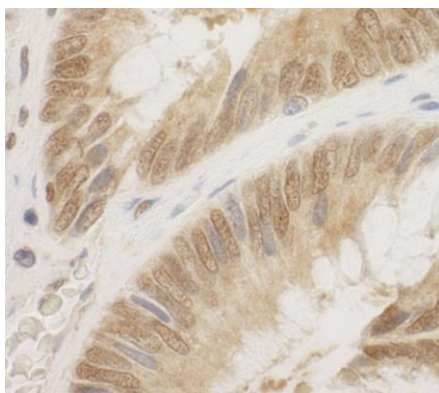
**IHC HUMAN CONTROLS** Breast Carcinoma, Colon Carcinoma, Non-Small Cell Lung Cancer, Ovarian Carcinoma, Prostate Carcinoma

**IHC MOUSE CONTROLS** Colon Carcinoma CT26, Renal Cell Carcinoma, Teratoma

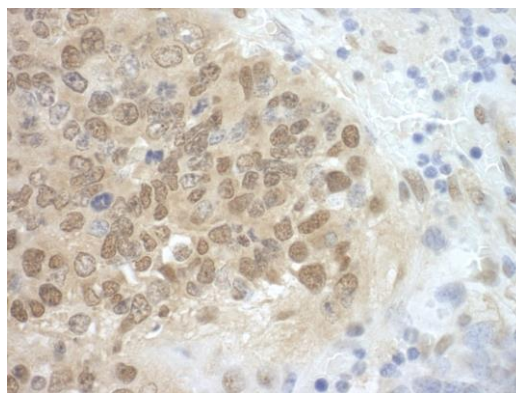
**ADDITIONAL INFO** <https://www.bethyl.com/product/IHC-00722-T>

Use the link above to view SDS, a current list of citations, and other product specific information.

This document certifies that this product has met all of the quality control standards defined by Bethyl Laboratories, Inc.  
Eric McIntush, PhD | Chief Scientific Officer Date: June 21, 2019

**Detection of human CDC6 by immunohistochemistry.**

*Sample:* FFPE section of human colon carcinoma. *Antibody:* Affinity purified rabbit anti-CDC6 (Cat. No. IHC-00722-T) used at a dilution of 1:100 *Detection:* DAB

**Detection of mouse CDC6 by immunohistochemistry.**

*Sample:* FFPE section of mouse teratoma. *Antibody:* Affinity purified rabbit anti-CDC6 (Cat. No. IHC-00722-T) used at a dilution of 1:100 *Detection:* DAB